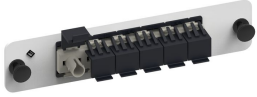


OptiSPEED® Adapter Pack, White, 1000-Type, with 1 6 fiber, Multimode ST ganged adapter, beige, shuttered



- Uniprise panels for Ready shelves and wall mount enclosures come in SC and LC configurations. Any combination of adapter panels can be used in the enclosures, up to the maximum number of openings

## OBSOLETE

This product was discontinued on: June 26, 2018

## Product Classification

<b>Regional Availability</b>	Asia   Australia/New Zealand   EMEA   Latin America   North America
<b>Portfolio</b>	CommScope®
<b>Product Type</b>	Fiber adapter pack
<b>Product Brand</b>	OptiSPEED®
<b>Product Series</b>	1000-style

## General Specifications

<b>Application</b>	Used in conjunction with SD Panels   Used in conjunction with panels and enclosures (rack, wall, and floor mount) that accept 1000 style panels
<b>Adapter Color</b>	Beige
<b>Adapter Cutout, quantity</b>	1
<b>Adapters, quantity</b>	1
<b>Body Style</b>	Ganged
<b>Interface</b>	ST/UPC
<b>Shuttered</b>	Yes
<b>Total Ports, quantity</b>	3

## Optical Specifications

<b>Fiber Mode</b>	Multimode
-------------------	-----------

## Regulatory Compliance/Certifications

**Agency**

ISO 9001:2015

**Classification**

Designed, manufactured and/or distributed under this quality management system