

COMMSCOPE®

SYSTEMAX® Solutions

CALA Ordering Guide

Q1 2023

Table of contents

Fiber Solutions.....	4
Fiber Cable Description Key	4
Optical Fiber Cable	5
Indoor Premises Cable.....	5
Indoor/Outdoor Cable.....	7
Indoor/Outdoor Stranded Loose Tube Cable.....	8
All-dry Outside Plant Cable.....	10
All-dry Indoor/Outdoor Cable.....	11
Outside Plant Composite Fiber Cables.....	12
Outside Plant Cables.....	13
Fiber Panel Portfolios	14
Propel™.....	14
G2 Family.....	15
EPX, HD and UD Fiber Panels.....	15
G2 Adapter Packs.....	16
G2 Modules.....	17
G2 Pigtail Cassettes.....	20
G2 Wall Boxes and Accessories.....	21
Specialty Solutions.....	22
SYSTIMAX ULL Preterminated Trunk Cables.....	23
SYSTIMAX ULL Preterminated Trunk & Fanout Cables.....	24
SYSTIMAX ULL Array Cords.....	25
SYSTIMAX ULL Patch Cords.....	26
SYSTIMAX Uniboot ULL Patch Cords.....	28
SYSTIMAX InstaPatch 360 Trunk Cables.....	29
SYSTIMAX InstaPatch 360 Array Cords.....	31
SYSTIMAX Fiber Optic Patchcords & Pigtails.....	32
Fiber Connectivity.....	34
QWIK-FUSE Connector Kits, Tool Kits and Accessories	34
QWIK II Connector Kits	35
Fiber Optic Connectors	36
Fiber Optic Adapters	37
Faceplate Adapters	38
Splice Wallet Kits	38
Fiber Cleaning and Inspection Kits	39
Fiber Breakout Kits	39
Consumables	39
Fiber Cable Clamps	39
InstaPATCH® Cu.....	40
InstaPATCH® Cu Configurator.....	40
Modular Panels.....	41
SYSTIMAX 360™ Modular Panels.....	41
M-Series Modular Panels.....	41

Table of contents

imVision	42
imVision Copper Solutions	43
imVision Fiber Solutions	44
imVision Software	48
Powered Fiber Cable	49
Powered Fiber Cables	49
Power Extenders	50
Power Supply	50
Surface Mount Boxes	50
Plenum Powered Fiber Cable Transition Box	50
Copper solutions.....	51
Category 6A Products	51
GigaSPEED® X10D U/UTP Copper Cables.....	51
GigaSPEED X10D UTP Panels.....	53
GigaSPEED X10D UTP Information Outlets	54
GigaSPEED X10D UTP Patch Cords	54
Ceiling Connector Assemblies (UTP)	55
GigaSPEED X10D FTP Copper Cables.....	56
GigaSPEED X10D Shielded High Density Information Outlet	56
GigaSPEED X10D G10SP Modular Patch Cords.....	57
GigaSPEED X10D Evolve High Density Shielded Modular Panels.....	57
Ceiling Connector Assemblies (FTP)	57
Category 6 Products	58
GigaSPEED® XL UTP Copper Cables.....	58
GigaSPEED XL Panels.....	60
GigaSPEED XL Information Outlets	61
GigaSPEED XL Patch Cords.....	61
Ceiling Connector Assemblies (UTP)	63
Faceplates	64
FiberGuide®	68
Cable Management.....	70
19" Equipment Racks.....	70
Filler Panels	70
Horizontal Cable Management.....	71
Cable Managers.....	71
Vertical Cable Management	72

Fiber Cable Description Key



Cable family	
O	Outdoor Arid Core Gel-Filled Tubes
D	Outdoor Arid Core Gel-Free Tubes
B	Micro Cable for Air-Blown Installation
M	Messenger Self-Support
S	ADSS
C	In/Out Zero Halogen, CPR-only flame rated C for APAC cables LSZH only
Z	In/Out Zero Halogen, Dual listed & CPR listed
L	Indoor Zero Halogen, CPR-only flame rated
N	Indoor Zero Halogen, Dual listed
R	Riser
P	Plenum

Fiber Type	
8M	G.652.D
8W	G.652.D / G.657.A1
8W1*	*Connector Grade
8F	G.657.A1
8G	G.657.A2
8G2	G.657.B3
5L	LazrSPEED 300 OM3
5L1*	*Connector Grade
5K	LazrSPEED 550 OM4
5K1*	*Connector Grade
5G	LazrSPEED OM5 WB
RB	Matrix Flat Ribbon
RR	Rollable Ribbon
5X	Generic OM4
5Y	Generic OM3
8X	G.657.A1 8.6µ MFD
8Y	G.657.A2 8.6µ MFD

Trace color or jacket color	
NS	No Stripe
3G	3 Green Stripes
BL	Blue
OR	Orange
GR	Green
BR	Brown
SL	Slate
WH	White
RD	Red
BK	Black
YL	Yellow
VI	Violet
RS	Rose
AQ	Aqua

CPR rating	
B	Bca rated cable
C	Cca rated cable
D	Dca rated cable
E	Eca rated cable

Fiber count	
001-999	This field specifies the total fiber count in the cable. A value of "002" means 2 fiber strands, "048" means 48 fiber strands. Valid fiber counts are: 002, 004, 006, 008, 012, 024, 036, 048, 72, 96 144, 288.

Cable Construction Attributes	
HTS	High Tensile Strength
LTS	Low Tensile Strength
AY	Aramid Yarn Strength Elements
GY	Glass Yarn Strength Elements
GRPA	GRP Rod Dielectric Armored
NR	No Ripcord

Cable construction	
LN	Stranded Loose Tube All-Dielectric
LA	Stranded Loose Tube CST Armored
L2	Stranded Loose Tube Single Armor Double Jacket
L3	Stranded Loose Tube Double Armor Triple Jacket
LD	Stranded Loose Tube Dielectric Double Jacket
N3	Nonmetallic Triple Jacket
CN	Central Tube All-Dielectric
CA	Central Tube Armored
DN	Central Tube Drop Dielectric
DA	Central Tube Drop Armored
DF	Central Tube Flat Drop
DS	Distribution Cable
DZ	Interlocking Armoured Distribution Cable
MP	Loose-tube Cordage
MD	Mini Distribution
MZ	Loose-tube Interlocking Armoured Cordage
MN	Mini-Drop
RD	Retractable Dielectric

Cable printing	
M	Marked in meters
F	Marked in feet
X	Special print

Application – DS cable only	
MU	Multi unit
SU	Single Unit

Subunit fiber count	
12	Example "12" indicates 12 fiber per sub unit (tube)

Tube size and type	
14D	1.4 mm Micro sheath cable
15G	1.5 mm Gel-Filled / B-LN cable 250µ
16G	1.60 mm Gel-Filled / Other BL-N cable
17G	1.7 mm Gel-Filled
17T 200	1.7 mm Gel-filled / B-LN cable 200µ
18G	1.8 mm Gel-Filled / SLT
20G	2.00 mm Gel-Filled / SLT / Central Tube
21G	2.1 mm Gel-Filled / SLT
22G	2.2 mm Gel-Filled / SLT
23G	2.3 mm Gel-Filled / SLT
25G	2.50 mm Gel-Filled / SLT / Central Tube
25D	2.50 mm Gel-Free / SLT
28G	2.8 mm Gel-Filled / SLT
28D	2.8 mm Gel-Free / SLT / Central Tube
30G	3.0 mm Gel-Filled / SLT / Central Tube
35G	3.5 mm Gel-Filled / Central Tube
40T or G	4.00 mm Gel-Filled / Central Tube / Drop
60T	6.0 mm Gel-filled / Central Tube / Drop
SU	Single-unit – applies to DS construction
MU	Multi-unit – applies to DS construction

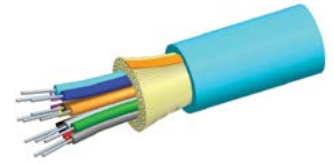
Specialty Material Jackets, Strength Elements, Armour	
AJ	Alternative Jacket (Rodent Resistant Additive)
HD	High Density Polyethylene
PA	Nylon Jacket
GRP	GRP Armour
FS	Fire Survival
AY	Aramid Yarns
GY	Glass Yarns

CommScope's cable descriptions allow customers to understand the major part of the cable construction with the help of the above key.

Please note, not all combinations/options are supported

Optical Fiber Cables

Indoor Premises Distribution Fiber Cables



Distribution cables are color coded 900um tight buffered fibers for easy connectorization. Fiber counts above 24 are unitized for manageability. All fiber types are bend insensitive. Single mode fiber is ITU-T G.657.A1 compliant, as well as backwards compatible to G.652.D.

ALL-DIELECTRIC (NON-ARMORED)								
Fiber Count	OM3		OM4		OM5		Singlemode	
	Material ID	Product Number	Material ID	Product Number	Material ID	Product Number	Material ID	Product Number
RISER								
6	700208143	R-006-DS-5L-FSUAQ	760012104	R-006-DS-5K-FSUAQ	760229724	R-006-DS-5G-FSULM	760004424	R-006-DS-8W-FSUYL
12	700208150	R-012-DS-5L-FSUAQ	760012112	R-012-DS-5K-FSUAQ	760229740	R-012-DS-5G-FSULM	760004440	R-012-DS-8W-FSUYL
24	760018556	R-024-DS-5L-FSUAQ	760018564	R-024-DS-5K-FSUAQ	760229765	R-024-DS-5G-FSULM	760018515	R-024-DS-8W-FSUYL
36	700208176	R-036-DS-5L-FMUAQ	760026831	R-036-DS-5K-FMUAQ	760229773	R-036-DS-5G-FMULM	760152496	R-036-DS-8W-FMUYL
48	700208218	R-048-DS-5L-FMUAQ	760026849	R-048-DS-5K-FMUAQ	760229781	R-048-DS-5G-FMULM	760004473	R-048-DS-8W-FMUYL
PLENUM								
6	700009772	P-006-DS-5L-FSUAQ	760012138	P-006-DS-5K-FSUAQ	760229377	P-006-DS-5G-FSULM	760004333	P-006-DS-8W-FSUYL
12	700009731	P-012-DS-5L-FSUAQ	760006411	P-012-DS-5K-FSUAQ	760229393	P-012-DS-5G-FSULM	760004358	P-012-DS-8W-FSUYL
24	760018689	P-024-DS-5L-FSUAQ	760018697	P-024-DS-5K-FSUAQ	760229419	P-024-DS-5G-FSULM	760018630	P-024-DS-8W-FSUYL
36	700009673	P-036-DS-5L-FMUAQ	760024547	P-036-DS-5K-FMUAQ	760229427	P-036-DS-5G-FMULM	760004374	P-036-DS-8W-FMUYL
48	760163022	P-048-DS-5L-FMUAQ	760024554	P-048-DS-5K-FMUAQ	760229435	P-048-DS-5G-FMULM	760004382	P-048-DS-8W-FMUYL
LSZH								
6	700009780	N-006-DS-5L-FSUAQ/D	760012153	N-006-DS-5K-FSUAQ/D	760231563	N-006-DS-5G-FSUL-M/D	760004242	N-006-DS-8W-FSUYL/D
12	700009749	N-012-DS-5L-FSUAQ/D	760012161	N-012-DS-5K-FSUAQ/D	760231589	N-012-DS-5G-FSUL-M/D	760004267	N-012-DS-8W-FSUYL/D
24	760019109	N-024-DS-5L-FSUAQ/D	760019109	N-024-DS-5L-FSUAQ/D	760231597	N-024-DS-5G-FSUL-M/D	760019075	N-024-DS-8W-FSUYL/D
36	700009681	N-036-DS-5L-FMUAQ/C	760072652	N-036-DS-5K-FMUAQ/C	760231605	N-036-DS-5G-FMUL-M/C	760004283	N-036-DS-8W-FMUYL/C
48	700211121	N-048-DS-5L-FMUAQ/C	760069831	N-048-DS-5K-FMUAQ/C	760231613	N-048-DS-5G-FMUL-M/C	760004291	N-048-DS-8W-FMUYL/C

Optical Fiber Cables

Indoor Premises Distribution Fiber Cables



Distribution cables are color coded 900um tight buffered fibers for easy connectorization. Fiber counts above 24 are unitized for manageability. All fiber types are bend insensitive. Single mode fiber is ITU-T G.657.A1 compliant, as well as backwards compatible to G.652.D.

INTERLOCKING ARMORED								
Fiber Count	OM3		OM4		OM5		Singlemode	
	Material ID	Product Number	Material ID	Product Number	Material ID	Product Number	Material ID	Product Number
RISER								
6	760127175	R-006-DZ-5L-FSUAQ	760127506	R-006-DZ-5K-FSUAQ	760229856	R-006-DZ-5G-FSULM	760127308	R-006-DZ-8W-FSUYL
12	760127183	R-012-DZ-5L-FSUAQ	760127514	R-012-DZ-5K-FSUAQ	760229872	R-012-DZ-5G-FSULM	760127316	R-012-DZ-8W-FSUYL
24	760127381	R-024-DZ-5L-FSUAQ	760127407	R-024-DZ-5K-FSUAQ	760229898	R-024-DZ-5G-FSULM	760127373	R-024-DZ-8W-FSUYL
36	760127191	R-036-DZ-5L-FMUAQ	760126532	R-036-DZ-5K-FMUAQ	760229906	R-036-DZ-5G-FMULM	760127332	R-036-DZ-8W-FMUYL
48	760127209	R-048-DZ-5L-FMUAQ	760126540	R-048-DZ-5K-FMUAQ	760229914	R-048-DZ-5G-FMULM	760127340	R-048-DZ-8W-FMUYL
PLENUM								
6	760127639	P-006-DZ-5L-FSUAQ	760128181	P-006-DZ-5K-FSUAQ	760229492	P-006-DZ-5G-FSULM	760127795	P-006-DZ-8W-FSUYL
12	760127647	P-012-DZ-5L-FSUAQ	760128017	P-012-DZ-5K-FSUAQ	760229518	P-012-DZ-5G-FSULM	760127803	P-012-DZ-8W-FSUYL
24	760127902	P-024-DZ-5L-FSUAQ	760127910	P-024-DZ-5K-FSUAQ	760229534	P-024-DZ-5G-FSULM	760127886	P-024-DZ-8W-FSUYL
36	760127662	P-036-DZ-5L-FMUAQ	760128074	P-036-DZ-5K-FMUAQ	760229542	P-036-DZ-5G-FMULM	760127829	P-036-DZ-8W-FMUYL
48	760127670	P-048-DZ-5L-FMUAQ	760125971	P-048-DZ-5K-FMUAQ	760229559	P-048-DZ-5G-FMULM	760127837	P-048-DZ-8W-FMUYL

Optical Fiber Cables

Indoor/Outdoor Fiber Cables



TIGHT BUFFERED - ALL-DIELECTRIC (NON-ARMORED)

Fiber Count	OM3		OM4		Singlemode	
	Material ID	Product Number	Material ID	Product Number	Material ID	Product Number
RISER						
12	700210982	Z-012-DS-5L-FSUBK/D	760006650	Z-012-DS-5K-FSUBK/D	760004184	Z-012-DS-8W-FSUBK/D
24	760070292	Z-024-DS-5L-FSUBK/D	760070300	Z-024-DS-5K-FSUBK/D	760070276	Z-024-DS-8W-FSUBK/D
48	760010371	Z-048-DS-5L-FMUBK/C	760130864	Z-048-DS-5K-FMUBK/C	760090309	Z-048-DS-8W-FMUBK/C
72	760019612	Z-072-DS-5L-FMUBK/B2	760150961	Z-072-DS-5K-FMUBK/B2	760067595	Z-072-DS-8W-FMUBK/B2
PLENUM						
12	760037374	P-012-OD-5L-FSUBK	760037432	P-012-OD-5K-FSUBK	760037192	P-012-OD-8W-FSUBK
24	760037390	P-024-OD-5L-FSUBK	760037457	P-024-OD-5K-FSUBK	760037218	P-024-OD-8W-FSUBK
48	760038083	P-048-OD-5L-FMUBK	760038141	P-048-OD-5K-FMUBK	760037903	P-048-OD-8W-FMUBK
72	760038109	P-072-OD-5L-FMUBK	760038166	P-072-OD-5K-FMUBK	760037929	P-072-OD-8W-FMUBK

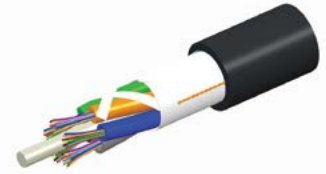


TIGHT BUFFERED - INTERLOCKING ARMORED

Fiber Count	OM4		Singlemode	
	Material ID	Product Number	Material ID	Product Number
RISER				
12	760164046	Z-012-DZ-5K-FSUBK/B2	760134759	Z-012-DZ-8W-FSUBK/B2
24	760140525	Z-024-DZ-5K-FSUBK/B2	760134858	Z-024-DZ-8W-FSUBK/B2
48	760239118	Z-048-DZ-5K-FMUBK/B2	760134833	Z-048-DZ-8W-FMUBK/B2
PLENUM				
12	760171470	P-012-OZ-5K-FSUBK	760134924	P-012-OZ-8W-FSUBK
24	760134981	P-024-OZ-5K-FSUBK	760134932	P-024-OZ-8W-FSUBK
48	760149203	P-048-OZ-5K-FMUBK	760134957	P-048-OZ-8W-FMUBK

Optical Fiber Cables

Indoor/ Outdoor Stranded Loose Tube Cables

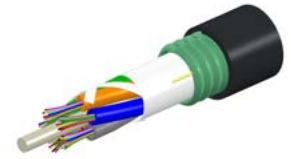


Indoor/outdoor cables are tough enough for outdoor use while also being listed for indoor use. Stranded Loose Tube I/O cables contain S-Z stranded gel-free buffer tubes with twelve 250um colored fibers per color coded tube.

ALL-DIELECTRIC (NON-ARMORED)						
Fiber Count	OM3		OM4		Singlemode	
	Material ID	Product Number	Material ID	Product Number	Material ID	Product Number
RISER						
12	760136036	R-012-LN-5L-F12BK/25D	760101295	R-012-LN-5K-F12BK/25D	760086371	R-012-LN-8W-F12BK/25D
24	760086413	R-024-LN-5L-F12BK/25D	760101303	R-024-LN-5K-F12BK/25D	760086405	R-024-LN-8W-F12BK/25D
48	760136044	R-048-LN-5L-F12BK/25D	760228247	R-048-LN-5K-F12BK/25D	760086470	R-048-LN-8W-F12BK/25D
72	760130062	R-072-LN-5L-F12BK/25D	760101329	R-072-LN-5K-F12BK/25D	760086538	R-072-LN-8W-F12BK/25D
96	760130930	R-096-LN-5L-F12BK/25D	760242106	R-096-LN-5K-F12BK/25D	760086561	R-096-LN-8W-F12BK/25D
144	760136051	R-144-LN-5L-F12BK/25D	760139980	R-144-LN-5K-F12BK/25D	760086652	R-144-LN-8W-F12BK/25D
PLENUM						
12	760106914	P-012-LN-5L-F12BK/25D	760107805	P-012-LN-5K-F12BK/25D	760106880	P-012-LN-8W-F12BK/25D
24	760094953	P-024-LN-5L-F12BK/25D	760106807	P-024-LN-5K-F12BK/25D	760106922	P-024-LN-8W-F12BK/25D
48	760094995	P-048-LN-5L-F12BK/25D	760103531	P-048-LN-5K-F12BK/25D	760094961	P-048-LN-8W-F12BK/25D
72	760095026	P-072-LN-5L-F12BK/25D	760105536	P-072-LN-5K-F12BK/25D	760095000	P-072-LN-8W-F12BK/25D
96	760095059	P-096-LN-5L-F12BK/25D	760105700	P-096-LN-5K-F12BK/25D	760095034	P-096-LN-8W-F12BK/25D
144	760095083	P-144-LN-5L-F12BK/25D	760139998	P-144-LN-5K-F12BK/25D	760095067	P-144-LN-8W-F12BK/25D
LSZH						
6	760154831	Z-006-LN-5L-F06BK/25D/E	760229690	Z-006-LN-5K-F06BK/25D/E	760154757	Z-006-LN-8W-F06BK/25D/E
12	760154849	Z-012-LN-5L-F12BK/25D/E	760228684	Z-012-LN-5K-F12BK/25D/E	760154765	Z-012-LN-8W-F12BK/25D/E
24	760154856	Z-024-LN-5L-F12BK/25D/E	760228965	Z-024-LN-5K-F12BK/25D/E	760154773	Z-024-LN-8W-F12BK/25D/E
48	760154864	Z-048-LN-5L-F12BK/25D/E			760154799	Z-048-LN-8W-F12BK/25D/E

Optical Fiber Cables

Indoor/ Outdoor Stranded Loose Tube Cables



STRANDED LOOSE TUBE MINI SINGLE JACKET - ARMORED CABLES

Fiber Count	OM3		OM4		Singlemode	
	Material ID	Product Number	Material ID	Product Number	Material ID	Product Number
6	760243281	C-006-LA-5L-M06BK/20G/B	760243280	C-006-LA-5K-M06BK/20G/B	760241034	C-006-LA-8W-M06BK/20G/B
12	760243286	C-012-LA-5L-M12BK/20G/B	760243285	C-012-LA-5K-M12BK/20G/B	760241035	C-012-LA-8W-M12BK/20G/B
24	760243288	C-024-LA-5L-M12BK/20G/C	760243287	C-024-LA-5K-M12BK/20G/C	760241036	C-024-LA-8W-M12BK/20G/C
48	760243292	C-048-LA-5L-M12BK/20G/C	760243291	C-048-LA-5K-M12BK/20G/C	760241037	C-048-LA-8W-M12BK/20G/C



INTERLOCKING ARMORED

Fiber Count	OM3		OM4		Singlemode	
	Material ID	Product Number	Material ID	Product Number	Material ID	Product Number
RISER						
12	760130955	R-012-LZ-5L-F12BK/25D	760149534	R-012-LZ-5K-F12BK/25D	760120261	R-012-LZ-8W-F12BK/25D
24	760130963	R-024-LZ-5L-F12BK/25D	760239119	R-024-LZ-5K-F12BK/25D	760130088	R-024-LZ-8W-F12BK/25D
48	760130989	R-048-LZ-5L-F12BK/25D	760171488	R-048-LZ-5K-F12BK/25D	760132670	R-048-LZ-8W-F12BK/25D
PLENUM						
12	760162883	P-012-LZ-5L-F12BK/25D			760140475	P-012-LZ-8W-F12BK/25D
24	760164749	P-024-LZ-5L-F12BK/25D	760164764	P-024-LZ-5K-F12BK/25D	760140939	P-024-LZ-8W-F12BK/25D
48	760169722	P-048-LZ-5L-F12BK/25D	760199109	P-048-LZ-5K-F12BK/25D	760175232	P-048-LZ-8W-F12BK/25D

Optical Fiber Cables

All Dry Outside Plant Cables



The OSP cables are S-Z stranded gel-free loose tube cables with twelve 250um colored fibers per color coded buffer tube.

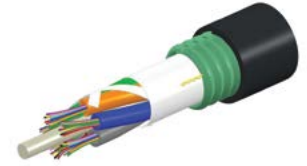
ALL-DIELECTRIC (NON-ARMORED)						
Fiber Count	OM3		OM4		Singlemode	
	Material ID	Product Number	Material ID	Product Number	Material ID	Product Number
12	760054171	D-012-LN-5L-F12NS	760054288	D-012-LN-5K-F12NS	760053843	D-012-LN-8W-F12NS
24	760054189	D-024-LN-5L-F12NS	760054296	D-024-LN-5K-F12NS	760053850	D-024-LN-8W-F12NS
48	760054205	D-048-LN-5L-F12NS	760054312	D-048-LN-5K-F12NS	760053876	D-048-LN-8W-F12NS
72	760054221	D-072-LN-5L-F12NS	760054338	D-072-LN-5K-F12NS	760053892	D-072-LN-8W-F12NS



ARMORED						
Fiber Count	OM3		OM4		Singlemode	
	Material ID	Product Number	Material ID	Product Number	Material ID	Product Number
12	760053629	D-012-LA-5L-F12NS	760053736	D-012-LA-5K-F12NS	760053280	D-012-LA-8W-F12NS
24	760053637	D-024-LA-5L-F12NS	760053744	D-024-LA-5K-F12NS	760053298	D-024-LA-8W-F12NS
48	760053652	D-048-LA-5L-F12NS	760053769	D-048-LA-5K-F12NS	760053314	D-048-LA-8W-F12NS
72	760053678	D-072-LA-5L-F12NS	760053785	D-072-LA-5K-F12NS	760053330	D-072-LA-8W-F12NS

Optical Fiber Cables

All Dry Indoor/Outdoor Cables

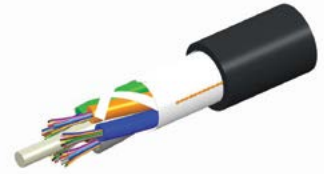


The OSP cables are S-Z stranded gel-free loose tube cables with twelve 250um colored fibers per color coded buffer tube.

ARMORED LSZH						
Fiber Count	OM3		OM4		Singlemode	
	Material ID	Product Number	Material ID	Product Number	Material ID	Product Number
6	760155036	Z-006-LA-5L-F06BK/25D/C	760239012	Z-006-LA-5K-F06BK/25D/C	760154955	Z-006-LA-8W-F06BK/25D/C
12	760155044	Z-012-LA-5L-F12BK/25D/C	760218529	Z-012-LA-5K-F12BK/25D/C	760154963	Z-012-LA-8W-F12BK/25D/C
24	760155051	Z-024-LA-5L-F12BK/25D/C	760239011	Z-024-LA-5K-F12BK/25D/C	760154971	Z-024-LA-8W-F12BK/25D/C
48	760155069	Z-048-LA-5L-F12BK/25D/C			760154997	Z-048-LA-8W-F12BK/25D/C

Optical Fiber Cables

Outside Plant Composite Fiber Cables (MM +SM in same cable)

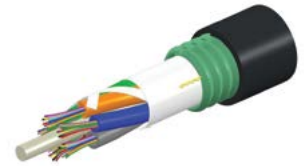


Composite cables are useful when running different network speeds, ie, data and building automation control/access control. Instead of running two cables with different fiber types, composite cables allow you to run one cable that contains multiple fiber types.

NOTE: Other cable constructions available; contact your Customer Service Representative for more information.

ALL-DIELECTRIC (NON-ARMORED)

Fiber Count	Material ID	Product Number	Description
24	760175588	D-024-LN-CM-F12NS/8W012/5K012	Contains 12 Single Mode and 12 OM4 fibers
24	760141655	D-024-LN-CM-F12NS/8W012/5L012	Contains 12 Single Mode and 12 OM3 fibers
48	760166207	D-048-LN-CM-F12NS/8W024/5K024	Contains 24 Single Mode and 24 OM4 fibers
48	760140731	D-048-LN-CM-F12NS/8W024/5L024	Contains 24 Single Mode and 24 OM3 fibers
72	760229625	D-072-LN-CM-F12NS/8W036/5K036	Contains 36 Single Mode and 36 OM4 fibers
72	760161687	D-072-LN-CM-F12NS/8W036/5L036	Contains 36 Single Mode and 36 OM3 fibers



ARMORED

Fiber Count	Material ID	Product Number	Description
24	760101360	D-024-LA-CM-F12NS/8W012/5K012	Contains 12 Single Mode and 12 OM4 fibers
24	760163741	D-024-LA-CM-F12NS/8W012/5L012	Contains 12 Single Mode and 12 OM3 fibers
48	760154633	D-048-LA-CM-F12NS/8W024/5K024	Contains 24 Single Mode and 24 OM4 fibers
48	760154690	D-048-LA-CM-F12NS/8W024/5L024	Contains 24 Single Mode and 24 OM3 fibers
72	760142752	D-072-LA-CM-F12NS/8W036/5K036	Contains 36 Single Mode and 36 OM4 fibers
72	760091066	D-072-LA-CM-F12NS/8W036/5L036	Contains 36 Single Mode and 36 OM3 fibers

Optical Fiber Cables

Outside Plant Cables



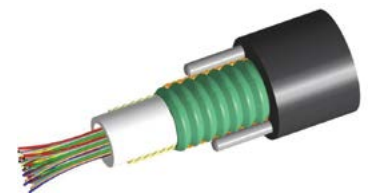
ALL DIELECTRIC NON ARMORED

Fiber Count	OM3		OM4		Singlemode	
	Material ID	Product Number	Material ID	Product Number	Material ID	Product Number
6	760178004	O-006-LN-5L-F06NS/25T	760177972	O-006-LN-5K-F06NS/25T	760178038	O-006-LN-8W-F06NS/25T
12	760178012	O-012-LN-5L-F12NS/25T	760177980	O-012-LN-5K-F12NS/25T	760178046	O-012-LN-8W-F12NS/25T
24	760172718	O-024-LN-5L-F12NS/25T	760177998	O-024-LN-5K-F12NS/25T	760172734	O-024-LN-8W-F12NS/25T
48	760172726	O-048-LN-5L-F12NS/25T			760172742	O-048-LN-8W-F12NS/25T



ARMORED

Fiber Count	OM3		OM4		Singlemode	
	Material ID	Product Number	Material ID	Product Number	Material ID	Product Number
6	760177832	O-006-LA-5L-F06NS/25T	760177790	O-006-LA-5K-F06NS/25T	760177907	O-006-LA-8W-F06NS/25T
12	760177840	O-012-LA-5L-F12NS/25T	760177808	O-012-LA-5K-F12NS/25T	760177915	O-012-LA-8W-F12NS/25T
24	760177857	O-024-LA-5L-F12NS/25T	760177816	O-024-LA-5K-F12NS/25T	760177923	O-024-LA-8W-F12NS/25T
48			760177824	O-048-LA-5K-F12NS/25T	760177931	O-048-LA-8W-F12NS/25T



ARMORED CLT

Fiber Count	OM3		OM4		Singlemode	
	Material ID	Product Number	Material ID	Product Number	Material ID	Product Number
12	BR760171199	O-012-CA-5L-F12NS	BR760245196	O-012-CA-5K-F12NS	BR760003947	O-012-CA-8W-F12NS
24	TBD	O-024-CA-5L-F12NS	BR760239055	O-024-CA-5K-F12NS	BR760003954	O-024-CA-8W-F12NS

Propel high-density panels

Propel high-density panels are designed to adapt and grow as your needs change. Like all Propel components, the panels are completely modular and interchangeable. They support 16-fiber connectivity and up to 144 LC-connected fibers per RU—giving you the flexibility and density to seamlessly advance to 400 Gb, 800 Gb and beyond.

Propel panels incorporate unique design features that make them faster to deploy and easier to manage than older generation panels. For example, panel blades can be removed with one hand for easier maintenance and changes by a single technician. When inserted, the blades lock in place on both sides to provide more secure patching. A re-designed rear cable management system allows more cable to be securely stored and attached.

At the same time, each panel is highly versatile. Module and adapter pack sizes can be scaled or mixed in each panel or blade.

Propel modules and adapter packs

Four sizes of interchangeable Propel fiber modules and adapters provide the breadth of capabilities for virtually any configuration. Modules support ultra-low loss OM4, OM5 wideband and singlemode fiber applications. MPO modules provide plug-and-play fiber connectivity—enabling greater flexibility, faster deployment, and easier moves, adds and changes. With 8-, 12-, 16- and 24-fiber modules and a wide range of MPO, LC and SN adapter/connector options, the Propel portfolio delivers the versatility your network demands with a minimum number of components.

LC and MPO 8-, 12- and 24-fiber components feature internal shutters to provide enhanced dust protection without the need for disposable dust caps. The shutters are carefully designed to prevent contact with connector ferrules and are translucent to allow light from a VFL to show through. Modules and adapter packs of varying sizes can be mixed on each blade for a best-fit panel configuration. All modules are standardized on Method B Enhanced polarity for easier, faster deployment of duplex and parallel applications.

Propel ULL trunk cables

- Propel trunk cables ship with toolless cable management clips that attached to Propel fiber panels
- Trunk pulling grips can be pulled using up to 100 lbs/45 kg of pulling tension
- Factory-terminated and tested trunk cables provide superior quality and performance for field connections
- Reliable transmit-to-receive connectivity using Method B Enhanced polarity maintenance maximizes administrative convenience
- Easy upgrade path to parallel transmission and associated applications, and increased value of existing infrastructure

Propel ULL patch cords and array cables

- MPO8 and MPO12 are available in 2 mm patch cable and MPO16 3 mm patch cable
- MPO-LC Uniboot array fanouts constructed with 2.0 mm reinforced furcation tubing for outstanding durability and dependability
- Factory-terminated and tested trunk cables provide superior quality and performance for field connections
- Array fanouts are available with multiple breakout lengths to simplify installation

Propel ULL ruggedized fanout cables

- ULL Propel compatible trunks are provisioned with pins to interface with ULL Propel modules (without pins)
- Propel trunk cables ship with toolless cable management clips that attached to Proper fiber panels
- Trunk pulling grips can be pulled using up to 100 lbs/45 kg of pulling tension
- Factory-terminated and tested trunk cables provide superior quality and performance for field connections
- Reliable transmit-to-receive connectivity using Method B Enhanced polarity maintenance maximizes administrative convenience
- Easy upgrade path to parallel transmission and associated applications, and increased value of existing infrastructure



For more information on Propel, visit commscope.com/propel

Fiber Panel Portfolios

G2 Family

The G2 family of panels and modules is a versatile solution that is available in configurations for any application. No matter what polarity, fiber count or performance needed; the G2 family has a solution. Our G2 family modules fit into any EPX, HD or UD panels offering density up to 72f duplex LC or 48f MPO adding flexibility to any configuration.

The following high-level overview provides details of the EPX, HD and UD panels and associated modules and components.

G2 PANELS				
Series	Density	Concept	Material ID	Description
EPX - Express Compact & Flexible	96 LC/RU 32 MPO/RU	Open Rear Fixed	760251098	EPX-1U-MOD-OPEN-FX
		Basic Enclosed Sliding	760249998	EPX-1U-MOD-ENC
			760251044	EPX-2U-MOD-ENC
			760251048	EPX-4U-MOD-ENC
		Basic Enclosed Fixed	760251042	EPX-1U-MOD-ENC-FX
			760251046	EPX-2U-MOD-ENC-FX
			760251050	EPX-4U-MOD-ENC-FX
HD - High Density Premium Features	96 LC/RU 32 MPO/RU	Standard Fixed	760210732	HD-1U-FX
			760210740	HD-2U-FX
			760210757	HD-4U-FX
		Standard Sliding	760209940	HD-1U
			760209957	HD-2U
			760209965	HD-4U
		Standard w/Splicing	760231506	HD-1U-SP
			760231514	HD-2U-SP
			760231522	HD-4U-SP
UD - Ultra Density Premium Features	144 LC/RU 48 MPO/RU	Premium Sliding	760227306	UD-2U
			760227314	UD-4U

EPX, HD and UD Panels

The EPX, HD and UD fiber panels support the G2 style module and adapter panels, which are backwards compatible with previous hardware such as the InstaPATCH360 and 360G2 fiber panels.

The HD and UD panels also both support intelligence through the Automated Infrastructure Management (AIM) imVision solution. Please download the [imVision Solutions Guide](#) for more information.

The EPX panel is a low cost panel available in 1U, 2U and 4U sizes in fixed and sliding.

The HD (High Density) panel is available in 1U, 2U and 4U sizes, and supports high density applications in data centers and buildings.

The UD (Ultra Density) panel is designed for even higher density applications and is available in 2U and 4U sizes.



EPX-1U-MOD-OPEN-FX



EPX-1U-MOD-ENC-FX



EPX-4U-MOD-ENC



HD-1U



HD-2U



HD-4U



UD-2U



UD-4U

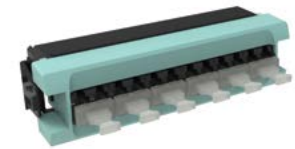
Fiber Panel Portfolios

G2 Adapter Packs



360DPis-24LC-LS

G2 ADAPTER PACKS				
12 Fiber			24 Fiber	
	Material ID	Description	Material ID	Description
LC Multimode (OM3-OM4)	760230938	360DPis-12LC-LS	760216754	360DPis-24LC-LS
LC Multimode (OM5)	760236043	360DPis-12LC-WB	760236041	360DPis-24LC-WB
LC Singlemode	760230946	360DPis-12LC-SM	760216762	360DPis-24LC-SM
LC Singlemode APC	760230961	360DPis-12LCA-SM	760216770	360DPis-24LCA-SM
SC Multimode (OM3-OM4)	760134551	360DP-12SC-LS	X	X
SC Singlemode	760135087	360DP-12SC-SM	X	X
SC Singlemode APC	760135095	360DP-12SCA-SM	X	X



360DPIp-12LC-LS

G2 ADAPTER PACK IPATCH READY				
12 Fiber			24 Fiber	
	Material ID	Description	Material ID	Description
LC Multimode (OM3-OM4)	760242975	360DPIp-12LC-LS	760242979	360DPIp-24LC-LS
LC Multimode (OM5)	760242977	360DPIp-12LC-WB	760242981	360DPIp-24LC-WB
LC Singlemode	760242976	360DPIp-12LC-SM	760242980	360DPIp-24LC-SM
LC Singlemode APC	760242978	360DPIp-12LCA-SM	760242982	360DPIp-24LCA-SM



360DP-2MPO



360DP-4MPO



360DP-6MPO



360DP-8MPO

G2 MPO ADAPTER PACKS		
	Material ID	Description
2 MPO	760107490	360DP-2MPO
4 MPO	760107508	360DP-4MPO
6 MPO	760107516	360DP-6MPO
8 MPO	760107524	360DP-8MPO

Fiber Panel Portfolios

G2 Modules



DM12-24LC-WB-ULL

G2 ULL modules support higher speeds over longer distances allowing you to meet the loss budgets of today's ultra low-loss links and can be used for the CommScope Application Assurance Guarantee. G2 ULL modules are factory tested to .35 dB IL multimode and 0.60 dB singlemode.

G2 MODULES - ULTRA LOW LOSS SOLUTIONS METHOD B ENHANCED								
	MPO 8 - 24 Fiber		MPO 12 - 12 Fiber		MPO 12 - 24 Fiber		MPO 24 - 24 Fiber	
	Material ID	Description	Material ID	Description	Material ID	Description	Material ID	Description
LC Multimode (OM3-OM4)	760236108	DM08-24LC-LS-ULL	760238838	DM12-12LC-LS-ULL	760236110	DM12-24LC-LS-ULL	760236112	DM24-24LC-LS-ULL
LC Multimode (OM5)	760236109	DM08-24LC-WB-ULL	760238839	DM12-12LC-WB-ULL	760236111	DM12-24LC-WB-ULL	760236113	DM24-24LC-WB-ULL
LC Singlemode UPC	760238082	DM08-24LC-SM-ULL	760238837	DM12-12LC-SM-ULL	760238083	DM12-24LC-SM-ULL	X	X



DM08iP-24LC-LS-ULL

G2 MODULES - ULTRA LOW LOSS SOLUTIONS METHOD B ENHANCED imVision								
	MPO 8 - 24 Fiber		MPO 12 - 12 Fiber		MPO 12 - 24 Fiber		MPO 24 - 24 Fiber	
	Material ID	Description	Material ID	Description	Material ID	Description	Material ID	Description
LC Multimode (OM3-OM4)	760236116	DM08iP-24LC-LS-ULL	760243043	DM12iP-12LC-LS-ULL	760236118	DM12iP-24LC-LS-ULL	760236120	DM24iP-24LC-LS-ULL
LC Multimode (OM5)	760236117	DM08iP-24LC-WB-ULL	760243044	DM12iP-12LC-SM-ULL	760236119	DM12iP-24LC-WB-ULL	760236121	DM24iP-24LC-WB-ULL
LC Singlemode	760238084	DM08iP-24LC-SM-ULL	760243045	DM12iP-12LC-WB-ULL	760238085	DM12iP-24LC-SM-ULL	760246311	DM24iP-24LC-SM-ULL

Fiber Panel Portfolios

G2 Modules



360DMiP-12LC-WB

G2 MODULES - LOW LOSS SOLUTIONS METHOD B				
MPO12 - 12 Fiber			MPO12 - 24 Fiber	
	Material ID	Description	Material ID	Description
LC Multimode (OM3-OM4)	760242967	360DMiP-12LC-LS	760242971	360DMiP-24LC-LS
LC Multimode (OM5)	760242969	360DMiP-12LC-WB	760242973	360DMiP-24LC-WB
LC Singlemode	760242968	360DMiP-12LC-SM	760242972	360DMiP-24LC-SM
LC Singlemode APC	760242970	360DMiP-12LCA-SM	760242974	360DMiP-24LCA-SM



360DMis-12LC-LS



360DMis-12LC-SM



360DMis-12LCA-SM



360DMis-24LC-LS

G2 MODULES - LOW LOSS SOLUTIONS METHOD B				
MPO12 - 12 Fiber			MPO12 - 24 Fiber	
	Material ID	Description	Material ID	Description
LC Multimode (OM3-OM4)	760224071	360DMis-12LC-LS	760206532	360DMis-24LC-LS, AQUA
LC Multimode (OM5)	760224113	360DMis-12LC-LS-WB	760217950	360DMis-24LC-WB
LC Singlemode UPC	760224089	360DMis-12LC-SM	760206540	360DMis-24LC-SM BLUE
LC Singlemode APC	760224238	360DMis-12LCA-SM	760206565	360DMis-24LCA-SM
SC Multimode (OM3-OM4)	760109967	360DM-12SC-LS	X	X
SC Singlemode UPC	760109975	360DM-12SC-SM	X	X
SC Singlemode APC	760109991	360DM-12SCA-SM	X	X

Fiber Panel Portfolios

G2 Modules

G2 conversion modules are available in low-loss, 0.50 dB MM/1.34 dB SM IL and ultra low-loss 0.40 dB MM/0.70 dB SM IL performance.



360CM12-2x3-LS

G2 CONVERSION MODULES				
Low Loss Method B			Ultra Low Loss Method B Enhanced	
	Material ID	Description	Material ID	Description
MPO12 (2) / MPO8 (3)	760200345	360CM12-2x3-LS	760237217	CM12-2X3-LS-ULL
MPO12 (4) / MPO8 (6)	760200352	360CM12-4x6-LS	760237220	CM12-4X6-LS-ULL
MPO12 (2) / MPO8 (3) Singlemode	760220400	360CM12-2x3-TS	760237216	CM12-2X3-SM-ULL
MPO12 (4) / MPO8 (6) Singlemode	760220418	360CM12-4x6-TS	760237219	CM12-4X6-SM-ULL
MPO12 (2) / MPO8 (3) OM5	X	X	760237218	CM12-2X3-WB-ULL
MPO12 (4) / MPO8 (6) OM5	X	X	760237221	CM12-4X6-WB-ULL



G2-SP-24LCG-PT



G2-SP-24LCV-PT

G2 SPLICE CASSETTES				
Stranded			Ribbon	
	Material ID	Description	Material ID	Description
LC Multimode (OM4)	760244927	G2-SP-24LCX-PT	760244928	G2-SP-24LCX-RPT
	760245399	G2-SP-12LCX-PT	760245400	G2-SP-12LCX-RPT
LC Multimode (OM5)	760245398	G2-SP-24LCV-PT	N/A	N/A
	760245403	G2-SP-12LCV-PT	N/A	N/A
LC UPC Singlemode	760244929	G2-SP-24LCG-PT	760244930	G2-SP-24LCG-RPT
	760245401	G2-SP-12LCG-PT	760245402	G2-SP-12LCG-RPT
LC APC Singlemode	760245961	G2-SP-24LAG-PT	N/A	N/A
	760245960	G2-SP-12LAG-PT	N/A	N/A
Empty Cassette No Fiber	760245494	G2-SP-24LC	N/A	N/A
	760245495	G2-SP-12LC	N/A	N/A
	760245497	G2-SP-0000	N/A	N/A

Fiber Panel Portfolios

G2 Pigtail Cassettes



360G2 Cartridge 12-LC-LS-AQ



360G2 Cartridge 12-LCA-SM-GR



360G2 Cartridge 12-LC-SM-BL

G2 PIGTAIL CASSETTES				
No Pigtails			Pigtails Included	
	Material ID	Description	Material ID	Description
LC Multimode (OM3-OM4)	760109256	360G2 Cartridge 12-LC-LS-AQ	760109470	360G2 Cartridge 12-LC-LS-AQ-Pigtails
LC Singlemode UPC	760109272	360G2 Cartridge 12-LC-SM-BL	760109496	360G2 Cartridge 12-LC-SM-BL-Pigtails
LC Singlemode APC	760109280	360G2 Cartridge 12-LCA-SM-GR	760109504	360G2 Cartridge 12-LCA-SM-GR-Pigtails
SC Multimode (OM3-OM4)	760109298	360G2 Cartridge 6-SC-LS-AQ	760109512	360G2 Cartridge 6-SC-LS-AQ-Pigtails A
	X	X	760109520	360G2 Cartridge 6-SC-LS-AQ-Pigtails B
SC Singlemode UPC	760109314	360G2 Cartridge 6-SC-SM-BL	760109553	360G2 Cartridge 6-SC-SM-BL-Pigtails A
	X	X	760109561	360G2 Cartridge 6-SC-SM-BL-Pigtails B
SC Singlemode APC	760109322	360G2 Cartridge 6-SCA-SM-GR	760109579	360G2 Cartridge 6-SCA-SM-GR-Pigtails A
	X	X	760109587	360G2 Cartridge 6-SCA-SM-GR-Pigtails B

Fiber Panel Portfolios

G2 Wall Boxes & G2 Accessories



WB2-EMT-BK-8P-MOD

Wall Mount Building Enclosures provide fiber distribution management when space is at a premium. The WB2-MOD's are compatible with all G2 modules and, G2 splice cassettes and adapter packs.

G2 WALLBOXES

Density	Material ID	Description
24 LC	760248900	WB2-EMT-BK-1P-MOD
48 LC	760248901	WB2-EMT-BK-2P-MOD
96 LC	760248902	WB2-EMT-BK-4P-MOD
192 LC	760248903	WB2-EMT-BK-8P-MOD



AGL-SPLICE-48



360 LP-STACK-SPT

G2 ACCESSORIES

Material ID	Product Code	Description
AGILE Panel Accessories		
760241378	AGL-SPLICE-48	AGILE Splice Tray Kit
Panel Accessories		
760039867	RS-2AF-16SF	RoloSplice Kit with 2 fusion splice trays for 1U and 2U rack mount, 2 and 4 port wall mount
760031856	RS-4AF-16SF	RoloSplice Kit with 4 fusion splice trays for 1U and 2U rack mount, 2 and 4 port wall mount
760031054	SW-6AF-16SF	Fusion Splice Wallet Kit with 6 splice trays for 4U rack mount and 8 port wall mount.
760148502	360-LP-STACK-SPT	Fusion Splice Tray Kit, stackable, large format for 1U and 2U rack mount
Miscellaneous		
760207944	HD-1U-REAR-EXT	1U Rear cable extension
760239082	SD-HD-UD-UDS2U-DOOR-LOCK-KT	Door lock kit for SD, HD, UD and UDS2U panels, including one (1) lock and one (1) key
760209619	CABLE-MOUNT-KIT-12	Cable attachment molding x 12
760058677	RMB-6-1/2	InstaPATCH Plus attachment bracket, rack mounted, six 1/2" fittings
760058685	RMB-6-3/8	InstaPATCH Plus attachment bracket, rack mounted, six 3/8" fittings
760109462	360G2-MOD-BLANK-4PK	Mod Panel Blank Adapter Pack, 4 Panels
760039875	G2-SRF	Small Diameter Cable Entrance Kit
760039883	G2-23BRKT	Mounting Bracket
760185595	KIT, FIBER DRUM	Fiber Drum Kit (2 per kit)
760238380	BK-FP-SML	Ribbon splice cassette blocking kit for HD-1U, HD-2U and UD-2U
760238381	BK-FP-LRG	Ribbon splice cassette blocking kit for HD-4U and UD-4U

Fiber Panel Portfolios Specialty Solutions



The pre-stubbed EHD panel has LC connectors at the panel and stub on the far end. It allows customers to meet demands for increasing bandwidth and more connections in a timely, cost-effective manner while reducing optical loss. Installers simply reel out cable from the stub end and splice to large fiber count Outside Plant or Backbone cables.

EHD PRE-TERMINATED PANELS

Density	Concept	Material ID	Description
144 LC	Premium Sliding	HCC0-1ADDL0AxxxM	1RU Pre-stubbed Patch Panel with LC Adapter and 144f I/O, Riser/LSZH cable, right cable entry, singlemode
144 LC	Premium Sliding	HCD0-1ADDL0AxxxM	1RU Pre-stubbed Patch Panel with LC Adapter and 144f I/O, Riser/LSZH cable, left cable entry, singlemode
288 LC	Premium Sliding	HCC0-2BDDL0AxxxM	2RU Pre-stubbed Patch Panel with LC Adapter and 288f I/O, Riser/LSZH cable, right cable entry, singlemode
288 LC	Premium Sliding	HCD0-2BDDL0AxxxM	2RU Pre-stubbed Patch Panel with LC Adapter and 288f I/O, Riser/LSZH cable, left cable entry, singlemode

xxx - Denotes cable length in meters (lengths from 25m, and in 25m increments thereafter to 400m)
Other configurations are available. Contact your CommScope representative for more details.

The ultra-density splice family of splicing panels features a modular, ultra-dense design that scales effortlessly while holding maintenance costs and space requirements to a minimum. Perfect for areas like meeting rooms and interconnects.



UDS-2U-BK-LA-A

UDS -ULTRA DENSITY SPLICING

Low Loss			Ultra Low Loss		
Density	Material ID	Description	Density	Material ID	Description
288 LC APC Method A	760239066	UDS-2U-BK-LA-A	288 LC UPC Method A	760239074	UDS-2U-BK-LC-A-ULL
288 LC APC Method B Enhanced	760239068	UDS-2U-BK-LA-B	288 LC UPC Method B Enhanced	760239076	UDS-2U-BK-LC-B-ULL
864 LC APC Method A	760239070	UDS-6U-BK-LA-A	864 LC UPC Method A	760239078	UDS-6U-BK-LC-A-ULL
864 LC APC Method B Enhanced	760239072	UDS-6U-BK-LA-B	864 LC UPC Method B Enhanced	760239080	UDS-6U-BK-LC-B-ULL

CommScope's Rapid Fiber panel offers unmatched savings in installation time, labor costs and performance. Rapid Fiber panels utilize CommScope's unique RapidReel fiber cable spools, which means the cable is always the right length. The Rapid Fiber panel's combination of cable, RapidReel spooling and connector technology in a single panel not only relieves cable congestion but also simplifies the ordering and inventory of equipment.



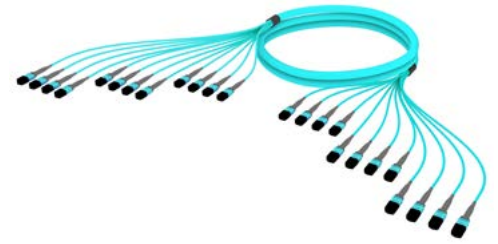
RCPB-4KBPUE06100-B

RAPID FIBER PANELS

Material ID	Description
RCPB-1K2PUE03100-B	1RU 24f Rapid Panel with LC/UPC to MPO, Plenum, singlemode, 31m, Method B Enhanced
RCPB-1K2PUE06100-B	1RU 24f Rapid Panel with LC/UPC to MPO, Plenum, singlemode, 61m, Method B Enhanced
RCPB-1K2PUE12200-B	1RU 24f Rapid Panel with LC/UPC to MPO, Plenum, singlemode, 122m, Method B Enhanced
RCPB-4KBPUE03100-B	4RU 288f Rapid Panel with LC/UPC to MPO, Plenum, singlemode, 31m, Method B Enhanced
RCPB-4KBPUE06100-B	4RU 288f Rapid Panel with LC/UPC to MPO, Plenum, singlemode, 61m, Method B Enhanced
RCPB-4KBPUE12200-B	4RU 288f Rapid Panel with LC/UPC to MPO, Plenum, singlemode, 122m, Method B Enhanced

SYSTIMAX ULL Preterminated Trunk Cables

- 8-, 12- and 24-fiber MPO connector-based modules available in OM4 and OM5 Wideband multimode fiber solutions
- 8- and 12-fiber MPO connector-based modules available in singlemode fiber solutions
- Factory-terminated and tested trunk cables provide superior quality and performance for field connections
- Reliable transmit-to-receive connectivity using Method B Enhanced polarity maintenance maximizes administrative convenience
- Simplified reconfiguration for moves, adds and changes (MACs)
- Easy upgrade path to parallel transmission and associated applications, and increased value of existing infrastructure
- SYSTIMAX ULL trunks are provisioned with pins to interface with G2 ULL modules (without pins)



SYSTIMAX ULL MPO-8 trunk cables

1 U	2 G	3 V	4 Q	5 X	6 Q	7 X	8 Q	9 H	10 -	11 N	12 A	13 M	14-16 010	
Construction type U Ultra-low loss	Family G Trunk, Plenum J Trunk, LSZH/ Riser	Fiber type G Singlemode (A2) X OM4 multimode V OM5 WB multimode	Termination end A QP MPO (Non-pinned) QX MPO (Pinned)	Termination end B QX MPO (Pinned)	Construction Q 8 Fiber PmP	Fiber count 8 8-fiber R 16-fiber F 24-fiber H 48-fiber U 64-fiber L 96-fiber M 144-fiber	Color M Aqua N Lime green J Yellow	Options A No gland B With gland C With pulling eye	Unit of measure F Feet M Meter	Length 010-999 Feet 003-305 Meter				
			· No non-pinned to non-pinned configurations.			· OM4 standard is aqua			· OM5 standard is lime green			· Singlemode standard is yellow		

SYSTIMAX ULL MPO-12 trunk cables

1 U	2 J	3 X	4 M	5 X	6 M	7 X	8 A	9 K	10 -	11 M	12 A	13 F	14-16 010	
Construction type U Ultra-Low Loss	Family G Trunk, Plenum J Trunk, LSZH/ Riser	Fiber type G Singlemode (A2) X OM4 multimode V OM5 WB multimode	Termination end A MP MPO (Non-pinned) MX MPO (Pinned)	Termination end B MX MPO (Pinned)	Construction A 12 Fiber PmP	Fiber count D 12-fiber F 24-fiber H 48-fiber K 72-fiber L 96-fiber M 144-fiber	Color M Aqua N Lime green J Yellow	Options A No gland B With gland C With pulling eye	Unit of measure F Feet M Meter	Length 010-999 Feet 003-305 Meter				
			· No non-pinned to non-pinned configurations.			· OM4 standard is aqua			· OM5 standard is lime green			· Singlemode standard is yellow		

SYSTIMAX ULL Preterminated Trunk & Fanout Cables

SYSTIMAX ULL MPO-24 trunk cables

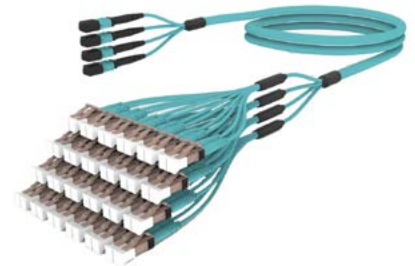
1 U	2 G	3 V	4 2	5 X	6 2	7 X	8 B	9 M	10 -	11 N	12 C	13 F	14-16 010
Construction type U Ultra-Low Loss	Family G Trunk, Plenum J Trunk, LSZH/ Riser	Fiber type G Singlemode (A2) X OM4 multimode V OM5 WB multimode	Termination end A 2C MPO (Non-pinned) equipment 2P MPO (Non-pinned) 2X MPO (Pinned)		Termination end B 2X MPO (Pinned)		Construction B 24-fiber PmP	Fiber count F 24-fiber H 48-fiber K 72-fiber L 96-fiber M 144-fiber	Color M Aqua N Lime green J Yellow		Options A No gland B With gland C With pulling eye	Unit of measure F Feet M Meter	Length 010-999 Feet 003-305 Meter

· No non-pinned to non-pinned configurations
· Pinned to non-pinned will be configured as trunk extensions

· OM4 standard is aqua
· OM5 standard is lime green
· Singlemode standard is yellow

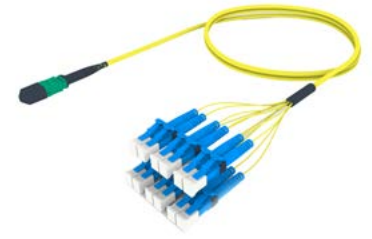
SYSTIMAX ULL ruggedized fanout cables

- 8-, 12- and 24-fiber MPO connector-based modular design enables simple connections
- Ruggedized fanouts are constructed with OM4 and OM5 Wideband and singlemode fibers
- Factory terminated and tested for instant field connections giving guaranteed quality and performance
- Designed for administrative convenience—guaranteed transmit-to-receive connectivity
- No special or non-standard polarity components



1 U	2 L	3 X	4 M	5 P	6 L	7 C	8 A	9 D	10 -	11 M	12 E	13 F	14-16 010
Construction type U Ultra-low loss	Cable family L Rugged F/O Plenum N Rugged F/O LSZH/Riser	Fiber type G Singlemode (A2) X OM4 multimode V OM5 WB multimode	Connector 1 QP 8f MPO (Non-pinned) QX 8f MPO (Pinned) MP 12f MPO (Non-pinned) MX 12f MPO (Pinned) 2P 24f MPO (Non-pinned) 2X 24f MPO (Pinned)		Connector 2 LC LC standard · Standard breakout length for Connector 1 is 33 in		Cordage size A 12-fiber PmP cable Q 8-fiber PmP Cable B 24-fiber PmP Cable *24-fiber PmP cable not available for singlemode	Fiber count D 12-fiber F 24-fiber S 32-fiber G 36-fiber H 48-fiber U 64-fiber K 72-fiber L 96-fiber	Color M Aqua N Lime green J Yellow		Breakout length LC End E 24 in breakout No gland F 24 in breakout with gland G 24 in breakout pulling grip S 36 in breakout no gland T 36 in breakout pulling grip U 36 in breakout with gland H 48 in breakout no gland J 48 in breakout with gland K 48 in breakout pulling grip L 72 in breakout no gland M 72 in breakout with gland N 72 in breakout pulling grip	UOM F Feet M Meter	Length minimal length based on breakout 24 in 7-999 ft 36 in 8-999 ft 48 in 9-999 ft 72 in 11-999 ft 24 in 2-305 m 36-48 in 3-305 m 72 in 4-305 m · Total length includes the breakout

SYSTIMAX ULL Array Cords



SYSTIMAX ULL LC array cords

- TeraSPEED singlemode 8- and 12-fiber or multimode 8- 12- and 24-fiber MPO connectors ensure fast and simple connections
- All 8-fiber MPO arrays have QSFP wiring
- Available in OM4 and OM5 Wideband multimode and singlemode fibers
- Factory-terminated and tested trunk cables provide superior quality and performance for field connections
- MPO-LC array fanouts are constructed with 1.6-millimeter reinforced zipcord furcation tubing for outstanding durability and dependability
- Array fanouts are available with multiple breakout lengths to simplify installation

1 U	2 Q	3 X	4 M	5 P	6 L	7 C	8 G	9 D	10 -	11 M	12 E	13 F	14-16 010
Construction type U Ultra-low loss	Cable family Q Plenum array R LSZH array	Fiber type G Singlemode (A2) X OM4 multimode V OM5 WB multimode	Connector 1 QP 8f MPO (non-pinned) QX 8f MPO (pinned) MP 12f MPO (non-pinned) MX 12f MPO (pinned) 2P 24f MPO (non-pinned) 2X 24f MPO (pinned)		Connector 2 LC LC connector		Cordage size G 12-fiber PmP Array Cord J 8-fiber PmP Array Cord H 24-fiber PmP Array Cord *24-fiber PmP cable not available for singlemode	Fiber count B 8-fiber D 12-fiber F 24-fiber		Color M Aqua N Lime green J Yellow · OM4 standard is aqua · OM5 standard is lime green · Singlemode standard is yellow	Breakout length D 12 in breakout No gland E 24 in breakout No gland H 48 in breakout No gland L 72 in breakout No gland	UOM F Feet M Meter	Length minimal length based on breakout 12 in 3-999 ft 24 in 4-999 ft 48 in 6-999 ft 72 in 8-999 ft 12 in 1-305 m 24-48 in 2-305 m 72 in 3-305 m · Other lengths available please contact CommScope

SYSTIMAX ULL MPO array cords

- 8-, 12- and 24-fiber MPO connector-based modular design enables simple connections
- Array cords are constructed with OM4 and OM5 Wideband and singlemode fibers
- Factory-terminated and tested for instant field connections giving guaranteed quality and performance
- MPO-MPO arrays are constructed with 3.0 mm PmP array cords
- Arrays are available with multiple breakout lengths; minimum overall assembly length may vary based on breakout length selected (please see configuration table for specifics)



1 U	2 Q	3 X	4 M	5 P	6 M	7 P	8 G	9 D	10 -	11 M	12 E	13 F	14-16 010
Construction type U Ultra-low loss	Cable family Q Plenum array R LSZH array	Fiber type G Singlemode (A2) X OM4 multimode V OM5 WB multimode	Connector 1 QP 8f MPO (non-pinned) QX 8f MPO (pinned) MP 12f MPO (non-pinned) MX 12f MPO (pinned) 2P 24f MPO (non-pinned) 2X 24f MPO (pinned) 2C 24f MPO (non-pinned) equipment		Connector 2 QP 8f MPO (non-pinned) QX 8f MPO (pinned) MP 12f MPO (non-pinned) MX 12f MPO (pinned) 2P 24f MPO (non-pinned) 2X 24f MPO (pinned)		Cordage size G 12-fiber PmP Array Cord J 8-fiber PmP Array Cord H 24-fiber PmP Array Cord *24-fiber PmP cable not available for singlemode	Fiber count B 8-fiber D 12-fiber F 24-fiber		Color M Aqua N Lime green J Yellow · OM4 standard is aqua · OM5 standard is lime green · Singlemode standard is yellow	Breakout length D 12 in breakout No gland E 24 in breakout No gland H 48 in breakout No gland L 72 in breakout No gland	UOM F Feet M Meter	Length minimal length based on breakout 12 in 3-999 ft 24 in 4-999 ft 48 in 6-999 ft 72 in 8-999 ft 12 in 1-305 m 24-48 in 2-305 m 72 in 3-305 m · Total length includes the breakout

*For use when there is more than one MPO connector on one or both ends (ie: 1x2, 1x3, 2x3)

*2P, 2X and 2C only available for multimode fiber

SYSTIMAX ULL Patch Cords



SYSTIMAX ULL polarity and gender changeable MPO patch cords

SYSTIMAX ULL 8 fiber-optic MTP PRO patch cords

1 U	2 Q	3 X	4 Q	5 F	6 Q	7 F	8 G	9 8	10 -	11 M	12 A	13 F	14-16 010
Construction type U Ultra-low loss	Cable family Q Plenum array R LSZH array	Fiber type X LazrSPEED 550 multimode V LazrSPEED OM5 WB multimode	Connector 1 QF 8f MTP PRO (non-pinned)	Connector 2 QF 8f MTP PRO (non-pinned)	Cordage size J 8-fiber PmP Array Cord	Fiber count 8 8-fiber	Color M Aqua N Lime green	Breakout length A No gland	UOM F Feet M Meter	Length 001-999 ft 001-305 m			

SYSTIMAX ULL 12 fiber-optic MTP PRO patch cords

1 U	2 Q	3 X	4 M	5 F	6 M	7 F	8 G	9 D	10 -	11 J	12 A	13 F	14-16 010
Construction type U Ultra-low loss	Cable family Q Plenum array R LSZH array	Fiber type X LazrSPEED 550 multimode V LazrSPEED OM5 WB multimode	Connector 1 MF 12f MTP PRO (non-pinned)	Connector 2 MF 12f MTP PRO (non-pinned)	Cordage size G 12-fiber PmP Array Cord	Fiber count D 12-fiber	Color M Aqua N Lime green	Breakout length A No gland	UOM F Feet M Meter	Length 001-999 ft 001-305 m			

SYSTIMAX ULL Patch Cords

SYSTIMAX ULL fiber-optic MPO-8 patch cords

1 U	2 Q	3 G	4 Q	5 X	6 Q	7 X	8 J	9 8	10 -	11 J	12 A	13 F	14-16 010
Construction type U Ultra-low loss	Cable family Q Plenum array R LSZH array	Fiber type G Singlemode (A2) X OM4 multimode V OM5 WB multimode	Connector 1 QP 8f MPO (non-pinned) QX 8f MPO (pinned)	Connector 2 QP 8f MPO (non-pinned) QX 8f MPO (pinned) UC Unconnected	Cordage size J 8-fiber PmP Array Cord	Fiber count 8 8-fiber	Color M Aqua N Lime green J Yellow	Breakout length A No gland	UOM F Feet M Meter	Length 001-999 ft 001-305 m			

SYSTIMAX ULL fiber-optic MPO-12 patch cords

1 U	2 Q	3 G	4 M	5 X	6 M	7 X	8 G	9 D	10 -	11 J	12 A	13 F	14-16 010
Construction type U Ultra-low loss	Cable family Q Plenum array R LSZH array	Fiber type G Singlemode (A2) X OM4 multimode V OM5 WB multimode	Connector 1 MP 12f MPO (non-pinned) MX 12f MPO (pinned)	Connector 2 MP 12f MPO (non-pinned) MX 12f MPO (pinned) UC Unconnected	Cordage size G 12-fiber PmP Array Cord	Fiber count D 12-fiber	Color M Aqua N Lime green J Yellow	Breakout length A No gland	UOM F Feet M Meter	Length 001-999 ft 001-305 m			

SYSTIMAX ULL fiber-optic MPO-24 patch cords

1 U	2 Q	3 V	4 2	5 X	6 2	7 X	8 H	9 F	10 -	11 N	12 A	13 F	14-16 010
Construction type U Ultra-low loss	Cable family Q Plenum array R LSZH array	Fiber type G Singlemode (A2) X OM4 multimode V OM5 WB multimode	Connector 1 2P 24f MPO (non-pinned) 2X 24f MPO (pinned)	Connector 2 2P 24f MPO (non-pinned) 2X 24f MPO (pinned) UC Unconnected	Cordage size H 24-fiber PmP Array Cord	Fiber count F 24-fiber	Color J Yellow M Aqua N Lime green	Breakout length A No gland	UOM F Feet M Meter	Length 001-999 ft 001-305 m			

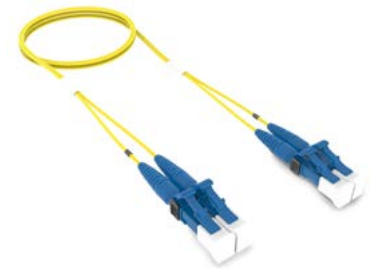
SYSTIMAX Uniboot ULL Patch Cords

SYSTIMAX Uniboot patch cords



1 U	2 D	3 X	4 L U	5 L U	6 6	7 - 8 2 - M	9 X	10 F	11-12 010	
Construction type U Ultra-low loss	Cable family D Plenum F LSZH/Riser	Fiber type G Singlemode (A2) X OM4 multimode V OM5 WB multimode	Connector 1 LU LC Uniboot	Connector 2 LU LC Uniboot	Cordage size K 1.5 mm 6 2.0 mm	Fiber count 2 2-fiber	Color M Aqua N Lime green J Yellow	Breakout length X No breakout	UOM F Feet M Meter	Length 2-200 Feet 1-061 Meters
							<ul style="list-style-type: none"> OM4 standard is aqua OM5 standard is lime green Singlemode standard is yellow 			<ul style="list-style-type: none"> Other lengths available please contact CommScope

SYSTIMAX ULL fiber-optic LC patch cords

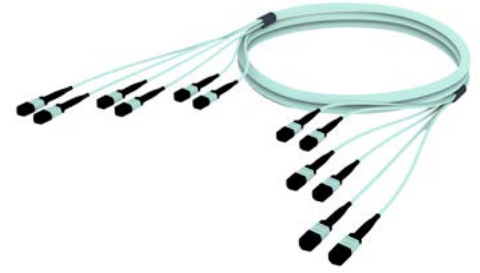


1 U	2 D	3 X	4 L	5 C	6 L	7 C	8 4	9 2	10 -	11 M	12 X	13 F	14-16 010
Construction type U Ultra-low loss	Cable family D Plenum F LSZH/Riser	Fiber type G Singlemode (A2) X OM4 multimode V OM5 WB multimode	Connector 1 LC Standard	Connector 2 LC LC Standard UC Unconnectorized	Cordage size 2 1.6mm simplex 4 1.6mm zipcord		Fiber count 1 1-fiber 2 2-fiber	Color M Aqua N Lime green J Yellow	Breakout length X No breakout	UOM F Feet M Meter	Length 2-200 Feet 1-061 Meters		
								<ul style="list-style-type: none"> OM4 standard is aqua OM5 standard is lime green Singlemode standard is yellow 					<ul style="list-style-type: none"> Other lengths available please contact CommScope

SYSTIMAX InstaPatch 360 Trunk Cables

SYSTIMAX InstaPATCH 360 preterminated trunk cables

- Available in OM3, OM4 or OM5 solutions
- 12-fiber MPO connector-based modular design enables simple connections
- Factory terminated and tested trunk cables for instant field connections and guaranteed quality and performance
- Designed for administrative convenience—guaranteed transmit-to-receive connectivity
- Supports easy reconfiguration for moves, adds and changes
- Easy upgrade path to parallel transmission and associated applications, while preserving the initial investment

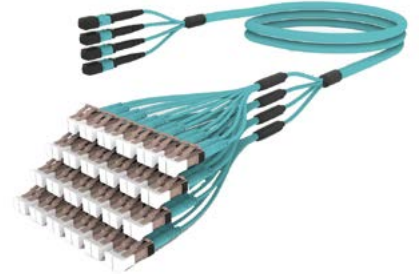


InstaPATCH 360 preterminated trunk cables configurator

1 F	2 G	3 X	4 M	5 P	6 M	7 P	8 A	9 D	10 -	11 M	12 B	13 F	14 - 16 010	
Prefix FG Trunk-Plenum FH Trunk-Plenum Armored FJ Trunk-LSZH Armored FK Trunk-LSZH Armored	Fiber Type X OM4 multimode Z OM3 multimode V OM5	Connector 1 MP MPO (non-pinned)	Connector 2 MP MPO (non-pinned) MX MPO (pinned)	Cordage Size A 12 Fiber PmP Cable	Fiber Count D 12 Fiber** F 24 Fiber G 36 Fiber H 48 Fiber K 72 Fiber L 96 Fiber M 144 Fiber	Jacket Color A Blue B Orange C Green D Brown E Slate G Red H Black J Yellow K Violet L Rose M Aqua N Lime	Breakout Length A No Gland B With Gland C Pulling Grip	UOM F Feet M Meter	Length 10-999 Feet 3-305 Meter					

• OM4 standard is Aqua
 • OM5 is Lime

SYSTIMAX InstaPatch 360 Trunk Cables



SYSTIMAX InstaPATCH 360 ruggedized fanout cables

- 12-fiber MPO connector-based modular design enables simple connections
- Ruggedized fanouts are constructed with OM3, OM4 or OM5 singlemode fibers
- Factory terminated and tested for instant field connections and guaranteed quality and performance
- Designed for administrative convenience—guaranteed transmit-to-receive connectivity
- No special or non-standard polarity components

SYSTIMAX InstaPATCH 360 ruggedized fanout cables

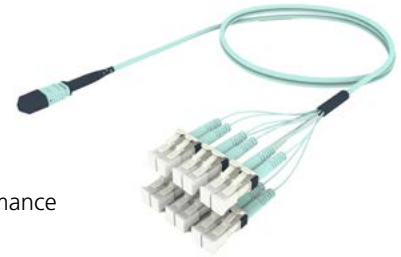
1 F	2 L	3 X	4 M	5 P	6 L	7 C	8 A	9 D	10 -	11 M	12 E	13 F	14 - 16 010						
Prefix		Fiber Type		Connector 1		Connector 2		Cordage Size		Fiber Count		Jacket Color		Breakout Length		UOM		Breakout Length	
FL	Rugged F/O Plenum	X	OM4 multimode	MP	MPO (non-pinned)	LC	LC Standard	A	12 Fiber PmP Cable	D	12 Fiber	A	Blue	E	24 in Breakout No Gland	F	Feet	24 in	7-999 ft
FM	Rugged F/O Plenum Armored	Z	OM3 multimode	MX	MPO (pinned)	SC	SC Standard			F	24 Fiber	B	Orange	F	24 in Breakout With Gland	M	Meter	48 in	9-999 ft
FN	Rugged F/O LSZH	V	OM5							G	36 Fiber	C	Green	G	24 in Breakout Pulling Grip			72 in	11-999 ft
FP	Rugged F/O LSZH Armored									H	48 Fiber	D	Brown	H	48 in Breakout No Gland			96 in	13-999 ft
										K	72 Fiber	E	Slate	J	48 in Breakout With Gland			24 in	2-999 m
												J	Yellow	K	48 in Breakout Pulling Grip			48 in	3-999 m
												K	Violet	L	72 in Breakout No Gland			72-96 in	4-999 m
												L	Rose	M	72 in Breakout With Gland				
												M	Aqua	N	72 in Breakout Pulling Grip				
												N	Lime	P	96 in Breakout No Gland				
												P		Q	96 in Breakout With Gland				
												Q		R	96 in Breakout Pulling Grip				
												R		S	36 in Breakout No Gland				
												S		T	36 in Breakout Pulling Grip				
												T		U	36 in Breakout With Gland				
												U							

• OM4 standard is Aqua
• OM5 is Lime

SYSTIMAX InstaPatch 360 Array Cords

SYSTIMAX InstaPATCH 360 array cords

- 12-fiber MPO connector-based modular design enables simple connections
- Array cords are constructed with OM3, OM4 or OM5 singlemode fibers
- Factory-terminated and tested for instant field connections and guaranteed quality and performance
- No special or non-standard polarity components
- MPO-LC/SC array fanouts are constructed with 1.6 mm reinforced zipcord furcation tubing for outstanding durability and dependability
- Array fanout assemblies are available in fanout length of 48" for cables over 10 feet; Cables 3-9 feet, 24 inch fanout; Cables 2 feet, 12 inch fanout



InstaPATCH 360 array cord configurator

1 F	2 Q	3 X	4 M	5 P	6 L	7 C	8 G	9 D	10 -	11 M	12 E	13 F	14 - 16 010						
Prefix FQ ArrayPlenum FR Array LSZH		Fiber Type X OM4 multimode Z OM3 multimode V OM5		Connector 1 MP MPO (non-pinned) MX MPO (pinned)		Connector 2 LC LC Connector SC SC Standard		Cordage Size G 12 Fiber PmP Array Cord		Fiber Count D 12 Fiber		Jacket Color M Aqua N Lime		Breakout Length D 12 in Breakout No Gland E 24 in Breakout No Gland H 48 in Breakout No Gland L 72 in Breakout No Gland P 96 in Breakout No Gland		UOM F Feet M Meter		Breakout Length 12 in 2-999 ft 24 in 4-999 ft 48 in 6-999 ft 72 in 8-999 ft 96 in 10-999 ft 24 in 1-305 m 48 in 2-305 m 72 in 3-305 m 96 in 4-305 m	
											•OM4 only available in Aqua •OM5 only available in Lime								

InstaPATCH 360 MPO array cord configurator

1 F	2 Q	3 X	4 M	5 P	6 L	7 C	8 G	9 D	10 -	11 M	12 E	13 F	14 - 16 010						
Prefix FQ ArrayPlenum FR Array LSZH		Fiber Type X LazrSPEED 550 Multimode		Connector 1 MP MPO (non-pinned) MX MPO (pinned)		Connector 2 LC LC Connector SC SC Standard		Cordage Size G 12 Fiber PmP Array Cord		Fiber Count D 12 Fiber		Jacket Color M Aqua		Breakout Length D 12 in Breakout No Gland E 24 in Breakout No Gland H 48 in Breakout No Gland L 72 in Breakout No Gland P 96 in Breakout No Gland		UOM F Feet M Meter		Breakout Length D 12 in Breakout No Gland E 24 in Breakout No Gland H 48 in Breakout No Gland L 72 in Breakout No Gland P 96 in Breakout No Gland	

1 F	2 Q	3 X	4 M	5 P	6 L	7 C	8 G	9 D	10 -	11 M	12 E	13 F	14 - 16 010						
Prefix FQ ArrayPlenum FR Array LSZH		Fiber Type X LazrSPEED 550 Multimode		Connector 1 MP MPO (non-pinned) MX MPO (pinned)		Connector 2 MP MPO (non-pinned) MX MPO (pinned)		Cordage Size H 24 Fiber PmP Array Cord		Fiber Count F 24 Fiber		Jacket Color M Aqua		Breakout Length D 12 in Breakout No Gland E 24 in Breakout No Gland H 48 in Breakout No Gland L 72 in Breakout No Gland P 96 in Breakout No Gland		UOM F Feet M Meter		Breakout Length 12 in 2-999 ft 24 in 4-999 ft 48 in 6-999 ft 72 in 8-999 ft 96 in 10-999 ft 24 in 1-305 m 48 in 2-305 m 72 in 3-305 m 96 in 4-305 m	
											•LazrSPEED only available in Aqua								

SYSTIMAX Fiber Optic Patchcords & Pigtails



SYSTIMAX fiber optic patch cords

- Duplex zipcord construction provides better mechanical performance with less risk of damage from crimping
- Rugged 1.6 mm or 3.0 mm cordage for durable and easily handled connections
- Outer jacket colored for easy identification

SYSTIMAX fiber optic patch cords configurator

1	2	3	4	5	6	7	8	9	10	11	12	13	14 - 16
F	D	X	L	C	L	C	4	D	-	M	X	F	010
Prefix	Fiber Type	Connector 1	Connector 2	Cordage Size	Fiber Count	Jacket Color	Breakout Length	UOM	Breakout	Length			
FD Jumper/Plenum FE Jumper-Riser FF Jumper-LSZH/Riser	X OM4 multimode W Singlemode V OM5	LC LC Standard SC SC Standard LA LC Angled SA SC Angled	LC LC Standard SC SC Standard LA LC Angled SA SC Angled	2 1.6mm Simplex 4 1.6mm Zipcord	1 1 Fiber 2 2 Fiber	A Blue B Orange C Green D Brown E Slate G Red H Black J Yellow K Violet L Rose M Aqua N Lime	X No Breakout	F Feet M Meter	2-200 1-061	Feet Meters			

SYSTIMAX Fiber Optic Patchcords & Pigtails

SYSTIMAX fiber optic pigtails



1 2 3 4 5 6 7 8 9 10 11 12 13 14-16
 F A X L C U C O 1 - M X F 002

Prefix

1	FA	Pigtail tight buffer
2	FB	Pigtail - Riser SBJ

Fiber type

3	X	OM4 multimode
	W	Singlemode

Connector 1

4	LC	LC standard
	LA	LC angled
5	SC	SC standard
	SA	SC angled

Connector 2

6	UC	Unconnectorized
7		

Cordage size

8	0	0.9 mm (Tight buffered fiber BTW)
	1	0.9 mm (SBJ cordage)

Fiber count

9	1	1 fiber
	A	6 fiber pigtail kit BL-WH (1-6)
	B	6 fiber pigtail kit RD-AQ (7-12)
	C	12 fiber pigtail kit BL-AQ (1-12)

Jacket color

11	A	Blue
	B	Orange
	C	Green
	D	Brown
	E	Slate
	G	Red
	H	Black
	J	Yellow
	K	Violet
	L	Rose
	M	Aqua
	X	KIT pigtail

Breakout length

12	X	No breakout
----	---	-------------

Unit of measurement

13	F	Feet
	M	Meter

Length

14	1-23	Feet
-	1-7	Meters
16		

LC keyed fiber pigtails are also available as part of CommScope secure fiber solutions. For more information please contact your Customer Service Representative.

Fiber Connectivity

QWIK-FUSE Connector Kits, Tool Kits & Accessories

CommScope's robust portfolio of field installable connectors are ideal for campus environments where exact measurements are not possible, or when there's a need for a fast repair to restore network connections. CommScope offers traditional epoxy/polish solutions, as well as solutions with a pre-polished ferrule from the factory, which eliminates the need for polishing, adhesives, and crimping in the field. Easy to use and quick to install, CommScope field installable connectors and tool kits are designed to simplify the termination process and enable you to terminate and move to your next project with minimal investment in time and cost.

- Fast to install
- No requirement for pre-engineered lengths
- Eliminates unwanted slack storage
- Consistent and reliable terminations

CommScope offers an extended line of field installable connectors and tool kits, including epoxy/polish connectors, mechanical-splice Qwik II connectors, and fusion splice-on Qwik-Fuse connectors. At CommScope, we know campus network solutions are not a one size fits all. You can trust in our products and team of experts to help add the flexibility you need to create a quality solution.



QWIK-FUSE CONNECTOR KITS, TOOL KITS AND ACCESSORIES

Material ID	Description	Connector	Fiber	Cable	Housing color	Package
760242874	MFC-LCF-09-5Y-12-PACK	LC	OM3/4/5	0.25/0.9 mm	Aqua	12/pack
760243371	MFC-LCF-20-5Y-12-PACK	LC	OM3/4/5	1.6/2.0 mm	Aqua	12/pack
760243372	SFC-LCF-09-8Y-12-PACK	LC-UPC	OS2	0.25/0.9 mm	Blue	12/pack
760243388	SFC-LCF-20-8Y-12-PACK	LC-UPC	OS2	1.6/2.0 mm	Blue	12/pack
760243389	SFC-LCAF-09-8Y-12-PACK	LC-APC	OS2	0.25/0.9 mm	Green	12/pack
760243390	SFC-LCAF-20-8Y-12-PACK	LC-APC	OS2	1.6/2.0 mm	Green	12/pack
760243391	MFC-SCF-09-5Y-12-PACK	SC	OM3/4/5	0.25/0.9 mm	Aqua	12/pack
760243392	MFC-SCF-20-5Y-12-PACK	SC	OM3/4/5	1.6/2.0 mm	Aqua	12/pack
760243393	MFC-SCF-30-5Y-12-PACK	SC	OM3/4/5	3.0 mm	Aqua	12/pack
760243394	SFC-SCF-09-8Y-12-PACK	SC-UPC	OS2	0.25/0.9 mm	Blue	12/pack
760243395	SFC-SCF-20-8Y-12-PACK	SC-UPC	OS2	1.6/2.0 mm	Blue	12/pack
760243396	SFC-SCF-30-8Y-12-PACK	SC-UPC	OS2	3.0 mm	Blue	12/pack
760243397	SFC-SCAF-09-8Y-12-PACK	SC-APC	OS2	0.25/0.9 mm	Green	12/pack
760243398	SFC-SCAF-20-8Y-12-PACK	SC-APC	OS2	1.6/2.0 mm	Green	12/pack
760243399	SFC-SCAF-30-8Y-12-PACK	SC-APC	OS2	3.0 mm	Green	12/pack
760243402	Qwik-Fuse Termination Tool Kit, LC, SC (for splice-on connector termination)					
760243403	Qwik-Fuse Installer Tool Kit, LC, SC, with Qwik-Fuse Installer and termination tools					
760244684	Qwik-Fuse cord tool, 1.6, 2.0, 3.0 mm					
760243576	Qwik-Fuse Installer					
760243617	Qwik-Fuse fiber holder, tight buffer and cordage (for use with Qwik-Fuse Installer and many AFL and Sumitomo splicers)					
760244521	Qwik-Fuse fiber holder, loose buffer and 250µm fiber (for use with Qwik-Fuse Installer and many AFL and Sumitomo splicers)					
760244706	Qwik-Fuse fiber holder, Fitel, set					
760245135	Qwik-Fuse connector duplex clip, LC, 10 per pack					
760245136	Qwik-Fuse connector duplex clip, SC, 10 per pack					

Fiber Connectivity

QWIK II Connector Kits



QWIK II CONNECTOR KITS						
Material ID	Product Number	Connector	Fiber	Cable	Housing color	Package
760117887	MFC-LCF-09-5X	LC	OM3/4/5	0.25/0.9 mm	Aqua	Single
760242343	MFC-LCF-UNV-5X*	LC	OM3/4/5	0.25/0.9/2.0/3.0 mm	Aqua	Single
760117903	MFC-LCF-09-6X	LC	OM1	0.25/0.9 mm	Beige	Single
760117895	SFC-LCF-09-8X	LC-UPC	OS2	0.25/0.9 mm	Blue	Single
760242344	SFC-LCF-UNV-8X*	LC-UPC	OS2	0.25/0.9/2.0/3.0 mm	Blue	Single
760242345	SFC-LCAF-UNV-8X*	LC-APC	OS2	0.25/0.9/2.0/3.0 mm	Green	Single
760184697	SFC-LCF-09-8A-25-PACK	LC-APC	OS2	0.25/0.9 mm	Green	25/pack
760117945	MFC-SCF-09-5X	SC	OM3/4/5	0.25/0.9 mm	Aqua	Single
760242346	MFC-SCF-UNV-5X*	SC	OM3/4/5	0.25/0.9/2.0/3.0 mm	Aqua	Single
760117960	MFC-SCF-09-6X	SC	OM1	0.25/0.9 mm	Beige	Single
760117952	SFC-SCF-09-8X	SC-UPC	OS2	0.25/0.9 mm	Blue	Single
760242347	SFC-SCF-UNV-8X*	SC-UPC	OS2	0.25/0.9/2.0/3.0 mm	Blue	Single
760242348	SFC-SCAF-UNV-8X*	SC-APC	OS2	0.25/0.9/2.0/3.0 mm	Green	Single
760184689	SFC-SCF-09-8A-25-PACK	SC-APC	OS2	0.25/0.9 mm	Green	25/pack
760118000	MFC-STF-09-5X	ST	OM3/4/5	0.25/0.9 mm	Aqua	Single
760118026	MFC-STF-09-6X	ST	OM1	0.25/0.9 mm	Beige	Single
760118018	SFC-STF-09-8X	ST-UPC	OS2	0.25/0.9 mm	Blue	Single

* Field terminated fiber patch cords are not included in CommScope Extended System Warranty

QWIK II CONNECTOR TOOL KIT COMPONENTS

Component	Qwik II termination kit (760242377)	Qwik II termination kit, premium (760248225)
Premium Case	√	√
0.9 mm cable clamp	√	√
2.0 mm cable clamp		√
3.0 mm cable clamp		√
Visual fault identifier (VFI)		√
High-precision fiber cleaver		√
Precision fiber cleaver	√	
Fiber stripper, 3-hole	√	√
Cutter, Kevlar	√	√
Marker, Sharpie	√	√
Fiber prep fluid	√	√
Fiber wipes	√	√
Termination instruction	√	√



QWIK II CONNECTOR TOOL KITS AND ACCESSORIES

Material ID	Description
760242377	Qwik II connector termination tool kit
760248225	Qwik II connector termination tool kit, premium
760243353	Replacement blade for high-precision cleaver
760249056	Optical Fiber Visual Fault Locator
760249518	High-precision Fiber Cleaver
760243349	Fiber clamp, buffer tube, 900 µm
760243350	Fiber clamp, 2.0 mm
760243351	Fiber clamp, 3.0 mm
760243081	Qwik II LC duplex clip, 6 per pack

Fiber Connectivity

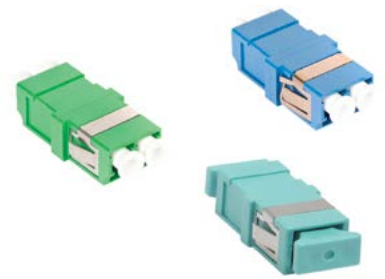
Fiber Optic Connectors



ANAEROBIC FIBER OPTIC CONNECTORS						
Mode	Connector	Polish	Cable (mm)	Simplex	Duplex	Bulk pack 100 pcs simplex
SM	SC	UPC	0.9	SFC-SCR-09-BL		SFC-SCR-09-BL-100-BULK-PACK
SM	SC	UPC	1.6	SFC-SCR-16-BL	SDC-SCR-16-BL	
SM	SC	UPC	3.0	SFC-SCR-30-BL	SDC-SCR-30-BL	
SM	SC	APC	0.9	SFC-SC/APC-09-GR		
SM	SC	APC	1.6	SFC-SC/APC-16-GR		
SM	SC	APC	3.0	SFC-SC/APC-30-GR		
MM	SC	UPC	0.9	MFC-SCR-09-BG		
MM	SC	UPC	1.6	MFC-SCR-16-BG	MDC-SCR-16-BG	
MM	SC	UPC	3.0	MFC-SCR-30-BG	MDC-SCR-30-BG	
SM	LC	UPC	0.9	SFC-LCR-09-BL		SFC-LCR-09-BL-100-BULK-PACK
SM	LC	UPC	1.6	SFC-LCR-16-BL	SDC-LCR-16-BL	
SM	LC	UPC	3.0	SFC-LCR-30-BL	SDC-LCR-30-BL	
SM	LC	APC	0.9	SFC-LC/APC-09-GR		
SM	LC	APC	1.6	SFC-LC/APC-16-GR	SDC-LC/APC-16-GR	
SM	LC	APC	3.0	SFC-LC/APC-30-GR		
MM	LC	UPC	0.9	MFC-LCR-09-BG		MFC-LCR-09-BG-100-BULK-PACK
MM	LC	UPC	1.6	MFC-LCR-16-BG	MDC-LCR-16-BG	
MM	LC	UPC	3.0	MFC-LCR-30-BG	MDC-LCR-30-BG	

Fiber Connectivity

Fiber Optic Adapters



ADAPTERS		
Material ID	Product Number	Description
760056002	MFA-LC02-AQ/LP-SHUTTERED	LC Duplex Low Profile Shuttered Adapter, Aqua, Single Pack
760115212	MFA-LC02-AQ/LP	LC Duplex Low Profile Adapter, Aqua, Single Pack
760115220	MFA-LC02-BG/LP	LC Duplex Low Profile Adapter, Beige, Single Pack
760056036	AFA-LC02-GR/LP-SHUTTERED	LC-APC Duplex Low Profile Shuttered Adapter, Green, Single Pack
760115246	AFA-LC02-GR/LP	LC-APC Duplex Low Profile Adapter, Green, Single Pack
760056028	SFA-LC02-BL/LP-SHUTTERED	LC Duplex Low Profile Shuttered Adapter, Blue, Single Pack
760115238	SFA-LC02-BL/LP	LC Duplex Low Profile Adapter, Blue, Single Pack
760115626	MFA-SC02-BG-FLANGELESS	SC Duplex Flangeless Adapter, Beige, Single Pack
108223181	MFA-SC01-BG	SC Simplex Adapter, Beige, Single Pack
108622895	MFA-SC02-AQ	SC Duplex Adapter, Aqua, Single Pack
700004880	MFA-SC02-BG	SC Duplex Adapter, Beige, Single Pack
760115543	MFA-SC01-AQ	SC Simplex Adapter, Aqua, Single Pack
760115568	MFA-SC01-BG-FLANGELESS	SC Simplex Flangeless Adapter, Beige, Single Pack
760115592	MFA-SC01-AQ-FLANGELESS	SC Simplex Flangeless Adapter, Aqua, Single Pack
760115600	MFA-SC02-AQ-FLANGELESS	SC Duplex Flangeless Adapter, Aqua, Single Pack
760036285	AFA-SC02-GR	SC-APC Duplex Adapter, Green, Single Pack
760115675	AFA-SC02-GR-FLANGELESS	SC-APC Duplex Flangeless Adapter, Green, Single Pack
700004815	SFA-SC02-BL	SC Duplex Adapter, Blue, Single Pack
760115642	SFA-SC02-BL-FLANGELESS	SC Duplex Flangeless Adapter, Blue, Single Pack

Fiber Connectivity

FACEPLATE ADAPTERS

Material ID	Product Number	Description
760237006	UNFA-EMM-SC01/LC02-AQ-PACK-25	SC Simplex/LC Duplex Low Profile Adapter Mounting Module/Collar Assembly, aqua – 25 pack
760155952	UNFA-EMM-SC01/LC02-BL-PACK-25	SC Simplex/LC Duplex Low Profile Adapter Mounting Module/Collar Assembly, blue – 25 pack
760010090	M81LC-029-Collar	Clear Plastic Collar for M81Series LC Adapter – 25 pack

SPLICE WALLET KITS

Material ID	Product Number	Description
760148411	KIT-SW-48-SFS-2FD	Splice Wallet Kit, 48 Single Fusion Splices (1x3x16), 1U/2U Shelf, 2 Fiber Drums
760148429	KIT-SW-36-MES-2FD	Splice Wallet Kit, 36 Mechanical Splices (1x3x12), 1U/2U Shelf, 2 Fiber Drums
760154682	KIT-SW-96-SFS-2FD-1U	Splice Wallet Kit, 96 Single Fusion Splices (2x3x16), 1U/2U Shelf, 2 Fiber Drums
760148437	KIT-SW-96-SFS-2FD	Splice Wallet Kit, 96 Single Fusion Splices (1x6x16), 2U Shelf, 2 Fiber Drums
760148445	KIT-SW-72-MES-2FD	Splice Wallet Kit, 72 Mechanical Splices (1x6x12), 2U Shelf, 2 Fiber Drums
760148452	KIT-SW-96-SFS-4FD	Splice Wallet Kit, 96 Single Fusion Splices (1x6x16), 4U Shelf, 4 Fiber Drums
760148460	KIT-SW-72-MES-4FD	Splice Wallet Kit, 72 Mechanical Splices (1x6x12), 4U Shelf, 4 Fiber Drums
760148478	KIT-SW-192-SFS-4FD	Splice Wallet Kit, 192 Single Fusion Splices (2x6x16), 4U Shelf, 4 Fiber Drums
760148486	KIT-SW-144-MES-4FD	Splice Wallet Kit, 144 Mechanical Splices (2x6x12), 4U Shelf, 4 Fiber Drums
760148502	360-LP-STACK-SPT	Fusion Splice Tray, stackable 48 Fusion Splices (0.5x6.5x14), 1U, 2U, & 4U
760031054	SW-6AF-16SF	Splice Wallet Kit, 96 Single Fusion Splices (1x6x16), WBE Shelf
760057075	SW-03-FUS	Splice Wallet Kit, 48 Single Fusion Splices (1x3x16), WBE Shelf

Fiber Connectivity



FIBER CLEANING/INSPECTION KITS

Material ID	Description
760053207	Cleaning Consumables Kit, Fiber Optic
760053199	Cleaning and Inspection Kit, Fiber Optic



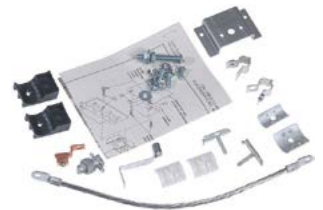
FIBER BREAK-OUT KITS

Material ID	Description
760018820	6 Fiber Breakout kit, loose tube, 24 inch, indoor
760018838	12 Fiber Breakout kit, loose tube, 24 inch, indoor
108459488	2 x 12 Fiber Breakout Kit, outside plant, gel blocking



CONSUMABLES

Material ID	Description
501857-2	Alcohol wipes
1457630-1	Curing sleeve; Used with: LC 900 μm, 12 pack
502656-1	Curing sleeve; Used with: SC Connectors



FIBER CABLE CLAMPS

Material ID	Product Number	Description
700025653	12A2 Clamp	Grounding Clamp Kit, non-metallic sheath cable
700025513	12A1 CLAMP	Grounding Clamp Kit, metallic sheath cable

InstaPATCH® Cu

InstaPATCH® Cu Configurator



C 1 A 2 A 3 A 4 C - 5 1 6 1 H 7 A 8 8 9 10 F 11 12 050

Cable Type

1	A	Cat 6A X10D – U/UTP (Plenum)
	B	Cat 6A X10D – U/UTP (Riser)
	C	Cat 6A X10D – U/UTP (LSZH)
	D	Cat 6A X10D – F/UTP (Plenum)
	E	Cat 6A X10D – F/UTP (Riser)
	F	Cat 6A X10D – F/UTP (LSZH)
	G	Cat 6 XL – U/UTP (Plenum)
	H	Cat 6 XL – U/UTP (Riser)
	J	Cat 6 XL – U/UTP (LSZH)
	Q	Cat 6A X10D – S/FTP (LSZH)
	R	Cat 6 UTP (LZSH) Class B Rated
	S	Cat 6A UTP (LZSH) Class B Rated
	T	Cat 6A FTP (LZSH) Class B Rated

Connector A

2	A	Outlet – Single Row Standard Density
	B	Outlet – Dual Row Standard Density
	C	Outlet – Dual Row High Density
	G	RJ45 Plug – Single Row Standard Density
	H	RJ45 Plug – Dual Row Standard Density
	J	RJ45 Plug – Dual Row High Density
	N	1100 Module
	R	360 1100 Evolve Module
	S	OneLink 2x6
	T	OneLink 2x4

Connector B

3	A	Outlet – Single Row Standard Density
	B	Outlet – Dual Row Standard Density
	C	Outlet – Dual Row High Density
	G	RJ45 Plug – Single Row Standard Density
	H	RJ45 Plug – Dual Row Standard Density
	J	RJ45 Plug – Dual Row High Density
	N	1100 Module
	R	360 1100 Evolve Module
	S	OneLink 2x6
	T	OneLink 2x4
	X	Unterminated

Link

4	B	6
	C	8
	D	12
	E	16
	F	18
	G	24

Orientation A

5	1	Trident Series Flat
	2	Right Paired Flat
	3	Right Series Flat
	4	Left Paired Flat
	5	Left Series Flat
	6	Trident Paired Flat
	A	Trident Series Angled
	B	Right Paired Angled
	C	Right Series Angled
	D	Left Paired Angled
E	Left Series Angled	
F	Trident Paired Angled	

Orientation B

6	1	Trident Series Flat
	2	Right Paired Flat
	3	Right Series Flat
	4	Left Paired Flat
	5	Left Series Flat
	6	Trident Paired Flat
	A	Trident Series Angled
	B	Right Paired Angled
	C	Right Series Angled
	D	Left Paired Angled
E	Left Series Angled	
F	Trident Paired Angled	
X	Not Applicable	

Bundling

7	H	Hook-n-loop
	S	Sleeving

Labeling

8	A	Generic Label
---	---	---------------

Outlet Color

9	0	Not Applicable
	1	Black (BK)
	2	Blue (BL)
	8	White (WH)
	C	Slate (SL)

Jacket Color

10	8	White (WH)
	C	Slate (SL)
	Z	Blue (BL)

UOM

11	F	Feet
	M	Meter

Length

12	XXX
----	-----

Configurations are not limited to the above.

Please contact your local sales representative for more information.

Modular Panels



SYSTIMAX 360™ MODULAR PANELS		
MATERIAL ID	PRODUCT NUMBER	DESCRIPTION
760187187	360-E-MOD-1U-24	24-Port Evolve Patch Panel
760187195	360-E-MOD-2U-48	48-Port Evolve Patch Panel
760187203	360-E-ANG-MOD-1U-24	24-Port Evolve Angled Patch Panel
760187211	360-E-ANG-MOD-2U-48	48-Port Evolve Angled Patch Panel
760187179	360 Evolve M-Series Adapter - 4 Pk	Evolve M-Series Adapter - 4 Pack
760187278	360 E Mod Label Sheet US LTR	Modular Panel Label Sheet US LTR
760186502	360 and UNP Label Sheet A4	Label Sheet for 360 and Universal Panels, A4



M-SERIES MODULAR PANELS		
MATERIAL ID	PRODUCT NUMBER	DESCRIPTION
760105429	M4800-1U-GS	M4800 1U 48-Port Panel - GS
760104307	M4800-1U-PS	M4800 1U 48-Port Panel - PS
760109744	M4800A-1U-GS	M4800A 1U Angled 48-Port Panel - GS
760109736	M4800A-1U-PS	M4800A 1U Angled 48-Port Panel - PS
760118315	M2400-1U-PS	M2400 1U 24 Port Panel - PS
760118323	M2400-1U-GS	M2400 1U 24-port panel - GS
760118331	M2400A-1U-PS	M2400A 1U Angled 24 Port Panel - PS
760118349	M2400A 1U-GS	M2400 1U Angled 24 Port Panel - GS
760104737	360-RCM-RM	Rear Cable Management System (Rack Mountable)
760207274	CPP-UDDM-M-1U-24	Discrete Distribution Module Panel, M-series, UTP, 1U, 24 port
760207282	CPP-UDDM-M-2U-48	Discrete Distribution Module Panel, M-series, UTP, 2U, 48 port
760207290	CPPA-UDDM-M-1U-24	Angled Discrete Distribution Module Panel, M-series, UTP, 1U, 24 port
760207308	CPPA-UDDM-M-2U-48	Angled Discrete Distribution Module Panel, M-series, UTP, 2U, 48 port

imVision® Automated Infrastructure Management

imVision is the automated infrastructure management system that provides a holistic view of campus network connectivity fiber and copper, all in real time. A key part of our complete portfolio of SYSTIMAX® structured cabling solutions, imVision shows you exactly where your assets are, what they're doing, and how you can get more out of them. It documents the end-to-end paths to all IP devices, such as fiber switches, IP security cameras and high-definition audio and video equipment, and maps fiber links between buildings.

imVision can be deployed as part of the SYSTIMAX HD and SYSTIMAX UD fiber panel product family, as well as with SYSTIMAX copper panels. Intelligent functionality can be factory-ordered for initial deployment, as shown in Figure A, or added via overlays on day 2. Figure B depicts a fiber overlay which can be added to select SYSTIMAX fiber panels.



Figure A



Figure B

imVision® Copper

SYSTIMAX imVision® Controller

Material ID	Description	Name
760237876	imV-CNTRL-X	imVision Controller X
760237879	imV-CNTRL-RK-XT	Rack Extender Kit



imVision Copper Panels

Material ID	Description	Name
760201137	360-iP-1100-E-GS3-1U-24	360 imVision 1100 GS3 Evolve 24P Panel
760201111	360-iP-1100-E-GS3-2U-48	360 imVision 1100 GS3 Evolve 48P Panel
760201145	360-iP-1100-E-GS6-1U-24	360 imVision 1100 GS6 Evolve 24P Panel
760201129	360-iP-1100-E-GS6-2U-48	360 imVision 1100 GS6 Evolve 48P Panel
760202531	360-iP-1100A-E-GS3-1U-24	360 imVision 1100 Angled GS3 Evolve 24 Port Panel
760202549	360-iP-1100A-E-GS3-2U-48	360 imVision 1100 Angled GS3 Evolve 48 Port Panel
760202556	360-iP-1100A-E-GS6-1U-24	360 imVision 1100 Angled GS6 Evolve 24 Port Panel
760202572	360-iP-1100A-E-GS6-2U-48	360 imVision 1100 Angled GS6 Evolve 48 Port Panel
760201178	360-iP-MFTP-E-HD6B-1U-24	360 imVision FTP Evolve 24P Panel
760201186	360-iP-MFTP-E-HD6B-2U-48	360 imVision FTP Evolve 48P Panel
760202564	360-iP-MFTP-A-E-HD6B-1U-24	360 imVision 1100 Angled FTP Evolve 24 Port Panel
760202580	360-iP-MFTP-A-E-HD6B-2U-48	360 imVision 1100 Angled FTP Evolve 48 Port Panel
760201244	360-iP-PMAX-GS3-24	360 imVision PatchMax GS3 24P Panel
760201210	360-iP-PMAX-GS3-48	360 imVision PatchMax GS3 48P Panel
760201269	360-iP-PMAX-GS6-24	360 imVision PatchMax GS6 24P Panel
760201236	360-iP-PMAX-GS6-48	360 imVision PatchMax GS6 48P Panel
760073866	iP-M4200i-24	imVision M4200i 24P UTP, Blank
760201152	360-iP-1100-E-1U-BLANK	360 imVision 1100 Evolve 24P, Blank
760201160	360-iP-1100-E-2U-BLANK	360 imVision 1100 Evolve 48P, Blank
760202598	360-iP-1100A-E-1U-BLANK	360 imVision 1100 Angled Evolve 24P; Blank
760202606	360-iP-1100A-E-2U-BLANK	360 imVision 1100 Angled Evolve 48P, Blank
760201194	360-iP-MFTP-E-1U-BLANK	360 imVision FTP Evolve 24P Panel, Blank
760201202	360-iP-MFTP-E-2U-BLANK	360 imVision FTP Evolve 48P Panel, Blank
760202614	360-iP-MFTP-A-E-1U-BLANK	360 imVision FTP Angled Evolve 24P Panel, Blank
760202622	360-iP-MFTP-A-E-2U-BLANK	360 imVision FTP Angled Evolve 48P Panel, Blank



imVision® Copper

imVision® Copper Upgrade Kits

Material ID	Description	Name
760198747	360-iP-UP-KIT-E-24	360 imVision Upg Kit Evolve 24P 10pk
760198754	360-iP-UP-KIT-E+PMAX-48	360 imVision Upg Kit Evolve & PM 48P 5pk
760198762	360-iP-UP-KIT-PMAX-2U-24	360 imVision Upg Kit PMax 2U 24P 10pk
760202630	360-iP-UP-KIT-AE-2	360 imVision Upg Kit Angled Evolve 24P 10pk
760202648	360-iP-UP-KIT-AE-48	360 imVision Upg Kit Angled Evolve 48P 5pk



HD Fiber Panel

Material ID	Description	Name
760217414	HD-iP-1U-96F-LC-DM-LS-SD	HD imVision 1U 96F-LC Distribution Module, OM4, Sliding Shelf
760217422	HD-iP-1U-96F-LC-DM-TS-SD	HD imVision 1U 96F-LC Distribution Module, Singlemode, Sliding Shelf
760217448	HD-iP-2U-192F-LC-DM-LS-SD	HD imVision 2U 192F-LC Distribution Module, OM4, Sliding Shelf
760217455	HD-iP-2U-192F-LC-DM-TS-SD	HD imVision 2U 192F-LC Distribution Module, Singlemode, Sliding Shelf
760218396	HD-iP-1U-48F-LC-DM-LS-SD	HD imVision 1U 48F-LC Distribution Module, OM4, Sliding Shelf
760218404	HD-iP-1U-48F-LC-DM-TS-SD	HD imVision 1U 48F-LC Distribution Module, Singlemode, Sliding Shelf
760218420	HD-iP-2U-96F-LC-DM-LS-SD	HD imVision 2U 96F-LC Distribution Module, OM4, Sliding Shelf
760218438	HD-iP-2U-96F-LC-DM-TS-SD	HD imVision 2U 96F-LC Distribution Module, Singlemode, Sliding Shelf
760217463	HD-iP-1U-32-MPO-DP-SD	HD imVision 1U 32-MPO Distribution Panel, Sliding Shelf
760217471	HD-iP-2U-64-MPO-DP-SD	HD imVision 2U 64-MPO Distribution Panel, Sliding Shelf
760236401	HD-iP-1U-96F-LC-DM08-ULL-LS-SD	HD imVision 1U 96F-LC Distribution MPO08 ULL Module, OM4, Sliding Shelf
760236400	HD-iP-1U-96F-LC-DM08-ULL-WB-SD	HD imVision 1U 96F-LC Distribution MPO08 ULL Module, OM5, Sliding Shelf
760236405	HD-iP-1U-96F-LC-DM12-ULL-LS-SD	HD imVision 1U 96F-LC Distribution MPO12 ULL Module, OM4, Sliding Shelf
760236404	HD-iP-1U-96F-LC-DM12-ULL-WB-SD	HD imVision 1U 96F-LC Distribution MPO12 ULL Module, OM5, Sliding Shelf
760236409	HD-iP-1U-96F-LC-DM24-ULL-LS-SD	HD imVision 1U 96F-LC Distribution MPO24 ULL Module, OM4, Sliding Shelf
760236408	HD-iP-1U-96F-LC-DM24-ULL-WB-SD	HD imVision 1U 96F-LC Distribution MPO24 ULL Module, OM5, Sliding Shelf
760236403	HD-iP-2U-192F-LC-DM08-ULL-LS-SD	HD imVision 2U 192F-LC Distribution MPO08 ULL Module, OM4, Sliding Shelf
760236402	HD-iP-2U-192F-LC-DM08-ULL-WB-SD	HD imVision 2U 192F-LC Distribution MPO08 ULL Module, OM5, Sliding Shelf
760236407	HD-iP-2U-192F-LC-DM12-ULL-LS-SD	HD imVision 2U 192F-LC Distribution MPO12 ULL Module, OM4, Sliding Shelf
760236406	HD-iP-2U-192F-LC-DM12-ULL-WB-SD	HD imVision 2U 192F-LC Distribution MPO12 ULL Module, OM5, Sliding Shelf
760236411	HD-iP-2U-192F-LC-DM24-ULL-LS-SD	HD imVision 2U 192F-LC Distribution MPO24 ULL Module, OM4, Sliding Shelf
760236410	HD-iP-2U-192F-LC-DM24-ULL-WB-SD	HD imVision 2U 192F-LC Distribution MPO24 ULL Module, OM5, Sliding Shelf

HD Fiber Panel (continued)

Material ID	Description	Name
760237316	HD-iP-4U-192F-LC-DM-LS-SD	HD imVision 4U 192F-LC Distribution Module, OM4, Sliding Shelf
760237317	HD-iP-4U-192F-LC-DM-TS-SD	HD imVision 4U 192F-LC Distribution Module, Singlemode, Sliding Shelf
760237318	HD-iP-4U-384F-LC-DM-LS-SD	HD imVision 4U 384F-LC Distribution Module, OM4, Sliding Shelf
760237319	HD-iP-4U-384F-LC-DM-TS-SD	HD imVision 4U 384F-LC Distribution Module, Singlemode, Sliding Shelf
760237320	HD-iP-4U-384F-LC-DM-WB-SD	HD imVision 4U 384F-LC Distribution Module, OM5, Sliding Shelf
760237321	HD-iP-4U-384F-LC-DM08-ULL-LS-SD	HD imVision 4U 384F-LC Distribution MPO08 ULL Module, OM4, Sliding Shelf
760237322	HD-iP-4U-384F-LC-DM08-ULL-WB-SD	HD imVision 4U 384F-LC Distribution MPO08 ULL Module, OM5, Sliding Shelf
760237323	HD-iP-4U-384F-LC-DM12-ULL-LS-SD	HD imVision 4U 384F-LC Distribution MPO12 ULL Module, OM4, Sliding Shelf
760237324	HD-iP-4U-384F-LC-DM12-ULL-WB-SD	HD imVision 4U 384F-LC Distribution MPO12 ULL Module, OM5, Sliding Shelf
760237325	HD-iP-4U-384F-LC-DM24-ULL-LS-SD	HD imVision 4U 384F-LC Distribution MPO24 ULL Module, OM4, Sliding Shelf
760237326	HD-iP-4U-384F-LC-DM24-ULL-WB-SD	HD imVision 4U 384F-LC Distribution MPO24 ULL Module, OM5, Sliding Shelf
760237327	HD-iP-4U-128-MPO-DP-SD	HD imVision 4U 128-MPO Distribution Panel, Sliding Shelf
760237332	HD-iP-4U-384F-LC-DM-LS-FX	HD imVision 4U 384F-LC Distribution Module, OM4, Fixed Shelf
760237333	HD-iP-4U-384F-LC-DM-TS-FX	HD imVision 4U 384F-LC Distribution Module, Singlemode, Fixed Shelf
760237334	HD-iP-4U-384F-LC-DM-WB-FX	HD imVision 4U 384F-LC Distribution Module, OM5, Fixed Shelf
760237335	HD-iP-4U-384F-LC-DM08-ULL-LS-FX	HD imVision 4U 384F-LC Distribution MPO08 ULL Module, OM4, Fixed Shelf
760237336	HD-iP-4U-384F-LC-DM08-ULL-WB-FX	HD imVision 4U 384F-LC Distribution MPO08 ULL Module, OM5, Fixed Shelf
760237337	HD-iP-4U-384F-LC-DM12-ULL-LS-FX	HD imVision 4U 384F-LC Distribution MPO12 ULL Module, OM4, Fixed Shelf
760237338	HD-iP-4U-384F-LC-DM12-ULL-WB-FX	HD imVision 4U 384F-LC Distribution MPO12 ULL Module, OM5, Fixed Shelf
760237339	HD-iP-4U-384F-LC-DM24-ULL-LS-FX	HD imVision 4U 384F-LC Distribution MPO24 ULL Module, OM4, Fixed Shelf
760237340	HD-iP-4U-384F-LC-DM24-ULL-WB-FX	HD imVision 4U 384F-LC Distribution MPO24 ULL Module, OM5, Fixed Shelf
760237341	HD-iP-4U-128-MPO-DP-FX	HD imVision 4U 128-MPO Distribution Panel, Fixed Shelf
760239559	HD-SP-iP-1U-96F-LC-DP	HD SP imVision 1U 96F-LC Distribution Panel
760239558	HD-SP-iP-1U-48F-LC-DP	HD SP imVision 1U 48F-LC Distribution Panel



UD Fiber Panel

Material ID	Description	Name
760236362	UD-iP-2U-96-MPO-DP-SD	UD imVision 2U 96-MPO Distribution Panel, Sliding Shelf
760236364	UD-iP-2U-288F-LC-DM-LS-SD	UD imVision 2U 288F-LC Distribution Module, OM4, Sliding Shelf
760236365	UD-iP-2U-288F-LC-DM-TS-SD	UD imVision 2U 288F-LC Distribution Module, Singlemode, Sliding Shelf
760236363	UD-iP-2U-288F-LC-DM-WB-SD	UD imVision 2U 288F-LC Distribution Module, OM5, Sliding Shelf
760236367	UD-iP-2U-288F-LC-DM08-ULL-LS-SD	UD imVision 2U 288F-LC Distribution MPO08 ULL Module, OM4, Sliding Shelf
760236366	UD-iP-2U-288F-LC-DM08-ULL-WB-SD	UD imVision 2U 288F-LC Distribution MPO08 ULL Module, OM5, Sliding Shelf
760236369	UD-iP-2U-288F-LC-DM12-ULL-LS-SD	UD imVision 2U 288F-LC Distribution MPO12 ULL Module, OM4, Sliding Shelf
760236368	UD-iP-2U-288F-LC-DM12-ULL-WB-SD	UD imVision 2U 288F-LC Distribution MPO12 ULL Module, OM5, Sliding Shelf
760236371	UD-iP-2U-288F-LC-DM24-ULL-LS-SD	UD imVision 2U 288F-LC Distribution MPO24 ULL Module, OM4, Sliding Shelf
760236370	UD-iP-2U-288F-LC-DM24-ULL-WB-SD	UD imVision 2U 288F-LC Distribution MPO24 ULL Module, OM5, Sliding Shelf
760237344	UD-iP-4U-576F-LC-DM-LS-SD	UD imVision 4U 576F-LC Distribution Module, OM4, Sliding Shelf
760237345	UD-iP-4U-576F-LC-DM-TS-SD	UD imVision 4U 576F-LC Distribution Module, Singlemode, Sliding Shelf
760237346	UD-iP-4U-576F-LC-DM-WB-SD	UD imVision 4U 576F-LC Distribution Module, OM5, Sliding Shelf
760237347	UD-iP-4U-576F-LC-DM08-ULL-LS-SD	UD imVision 4U 576F-LC Distribution MPO08 ULL Module, OM4, Sliding Shelf
760237348	UD-iP-4U-576F-LC-DM08-ULL-WB-SD	UD imVision 4U 576F-LC Distribution MPO08 ULL Module, OM5, Sliding Shelf
760237349	UD-iP-4U-576F-LC-DM12-ULL-LS-SD	UD imVision 4U 576F-LC Distribution MPO12 ULL Module, OM4, Sliding Shelf
760237350	UD-iP-4U-576F-LC-DM12-ULL-WB-SD	UD imVision 4U 576F-LC Distribution MPO12 ULL Module, OM5, Sliding Shelf
760237351	UD-iP-4U-576F-LC-DM24-ULL-LS-SD	UD imVision 4U 576F-LC Distribution MPO24 ULL Module, OM4, Sliding Shelf
760237352	UD-iP-4U-576F-LC-DM24-ULL-WB-SD	UD imVision 4U 576F-LC Distribution MPO24 ULL Module, OM5, Sliding Shelf
760237353	UD-iP-4U-192-MPO-DP-SD	UD imVision 4U 192-MPO Distribution Panel, Sliding Shelf
760237358	UD-iP-4U-576F-LC-DM-WB-FX	UD imVision 4U 576F-LC Distribution Module, OM5, Fixed Shelf
760237356	UD-iP-4U-576F-LC-DM-LS-FX	UD imVision 4U 576F-LC Distribution Module, OM4, Fixed Shelf
760237357	UD-iP-4U-576F-LC-DM-TS-FX	UD imVision 4U 576F-LC Distribution Module, Singlemode, Fixed Shelf
760237359	UD-iP-4U-576F-LC-DM08-ULL-LS-FX	UD imVision 4U 576F-LC Distribution MPO08 ULL Module, OM4, Fixed Shelf
760237360	UD-iP-4U-576F-LC-DM08-ULL-WB-FX	UD imVision 4U 576F-LC Distribution MPO08 ULL Module, OM5, Fixed Shelf
760237361	UD-iP-4U-576F-LC-DM12-ULL-LS-FX	UD imVision 4U 576F-LC Distribution MPO12 ULL Module, OM4, Fixed Shelf
760237362	UD-iP-4U-576F-LC-DM12-ULL-WB-FX	UD imVision 4U 576F-LC Distribution MPO12 ULL Module, OM5, Fixed Shelf
760237363	UD-iP-4U-576F-LC-DM24-ULL-LS-FX	UD imVision 4U 576F-LC Distribution MPO24 ULL Module, OM4, Fixed Shelf
760237364	UD-iP-4U-576F-LC-DM24-ULL-WB-FX	UD imVision 4U 576F-LC Distribution MPO24 ULL Module, OM5, Fixed Shelf
760237365	UD-iP-4U-192-MPO-DP-FX	UD imVision 4U 192-MPO Distribution Panel, Fixed Shelf

imVision® Fiber Upgrade Kits



Material ID	Description	Name
760105148	360 imVision Upg Kit G2 LC - 5pk	360 imVision Upg Kit G2 LC - 5pk
760168443	360G2-iP-96F-LC-SD-KIT-5PK	360G2 imVision 96F-LC, Sliding Shelf 5PK Kit
760169151	360G2-iP-32-MPO-SD-KIT-5PK	360G2 imVision 32-MPO, Sliding Shelf 5PK Kit
760248969	360G2-iP-32-MPO-SD-KIT-1PK	360G2 32-MPO, Sliding shelf, 1pk imVision upgrade kit
760248968	360G2-iP-96F-LC-SD-KIT-1PK	360G2 96F-LC, Sliding shelf, 1pk kit imVision upgrade kit
760252056	Support insert-4pk	360G2 imVision LC Support Insert, 4 pk
760109462	360G2 MOD Panel Blank-4pk	360G2 Mod Panel Blank Adapter, 4 pk

SYSTIMAX imVision-compatible Fiber Distribution Modules and Panels

Application Note: When ordering Distribution Modules for future upgrade to imVision, select DMs from the table below. The modules contain external shutters which can be easily removed to accommodate the upgrade kit.

Material ID	Description	Name
InstaPatch modules		
760242973	360DMiP-24LC-WB	InstaPATCH® 360 OM5 Module, 24 LC ports
760242971	360DMiP-24LC-LS	InstaPATCH® 360 OM4 Standard Module, 24 LC fibers (12 duplex ports)
760242967	360DMiP-12LC-LS	InstaPATCH® 360 OM4 Standard Module, 12 LC fibers (6 duplex ports)
760242974	360DMiP-24LCA-SM	InstaPATCH® 360 Singlemode APC Module, 24 LC fibers (12 duplex ports)
760242968	360DMiP-12LC-SM	InstaPATCH® 360 Singlemode Standard Module, 12 LC fibers (6 duplex ports)
760242970	360DMiP-12LCA-SM	InstaPATCH® 360 Singlemode APC Module, 12 LC fibers (6 duplex ports)
760242976	360DPIp-12LC-SM	InstaPATCH® 360, Singlemode SYSTIMAX 360 Distribution Panel 12 LC Blue imVision Ready
760242978	360DPIp-12LCA-SM	InstaPATCH® 360, Singlemode SYSTIMAX 360 Distribution Panel 12 LC Angled Green imVision Ready
760242980	360DPIp-24LC-SM	InstaPATCH® 360, Singlemode SYSTIMAX 360 Distribution Panel 24 LC, Blue
760242982	360DPIp-24LCA-SM	InstaPATCH® 360, Singlemode SYSTIMAX 360 Distribution Panel 24 LC APC, Green
ULL modules		
760236120	DM24ip-24LC-LS	G2 ULL OM4 MPO-24 Distribution Module, 1x24F MPO unpinned to 24F LC Aqua, Method B Enhanced, imVision Ready
760236121	DM24ip-24LC-WB	G2 ULL OM5 MPO-24 Distribution Module, 1x24F MPO unpinned to 24F LC Lime Green, Method B Enhanced, imVision Ready
760236118	DM12ip-24LC-LS	G2 ULL OM4 MPO-12 Distribution Module, 2x12F MPO unpinned to 24F LC Aqua, Method B Enhanced, imVision Ready
760236119	DM12ip-24LC-WB	G2 ULL OM5 MPO-12 Distribution Module, 2x12F MPO unpinned to 24F LC Lime Green, Method B Enhanced, imVision Ready
760236116	DM08ip-24LC-LS	G2 ULL OM4 MPO-8 Distribution Module, 3x8F MPO unpinned to 24F LC Aqua, Method B Enhanced, imVision Ready
760236117	DM08ip-24LC-WB	G2 ULL OM5 MPO-8 Distribution Module, 3x8F MPO unpinned to 24F LC Lime Green, Method B Enhanced, imVision Ready
760238084	DM08iP-24LC-SM-ULL	G2 ULL Singlemode MPO-8 Distribution Module, 3x8F MPO unpinned to 24F LC Blue, Method B Enhanced, imVision Ready
760238085	DM12iP-24LC-SM-ULL	G2 ULL Singlemode MPO-12 Distribution Module, 2x12F MPO unpinned to 24F LC Blue, Method B Enhanced, imVision Ready
760243043	DM12iP-12LC-LS-ULL	G2 ULL OM4 MPO-12 Distribution Module, 1x12F MPO unpinned to 12F LC Aqua, Method B Enhanced, imVision ready
760243044	DM12iP-12LC-SM-ULL	G2 ULL Singlemode MPO-12 Distribution Module, 1x12F MPO unpinned to 12F LC Blue, Method B Enhanced, imVision Ready
760243045	DM12iP-12LC-WB-ULL	G2 ULL OM5 MPO-12 Distribution Module, 1x12F MPO unpinned to 12F LC Lime Green, Method B Enhanced, imVision Ready
760107524	360DP-8MPO	InstaPATCH® 360 Distribution Panel, 360DP-8MPO, 8 x MPO
760242969	360DMiP-12LC-LS	G2 OM4 Standard Module, 12 LC fibers imVision Ready (6 duplex ports)



SYSTIMAX imVision-compatible Fiber Distribution Modules and Panels (continued)

Material ID	Description	Name
Distribution panels		
760242975	360DPIP-12LC-LS	InstaPATCH® 360, OM4 SYSTIMAX 360 Distribution Panel 12 LC Aqua imVision Ready
760242976	360DPIP-12LC-SM	InstaPATCH® 360, Singlemode SYSTIMAX 360 Distribution Panel 12 LC Blue imVision Ready
760242977	360DPIP-12LC-WB	360 Distribution Adapter Pack 12 LC OM5 Lime Green imVision Ready
760242978	360DPIP-12LCA-SM	InstaPATCH® 360, Singlemode SYSTIMAX 360 Distribution Panel 12 LC APC, Green imVision Ready
760242979	360DPIP-24LC-LS	InstaPATCH® 360, OM4 SYSTIMAX 360 Distribution Panel 24 LC, Aqua
760242980	360DPIP-24LC-SM	InstaPATCH® 360, Singlemode SYSTIMAX 360 Distribution Panel 24 LC, Blue
760242981	360DPIP-24LC-WB	360DPis-24LC-WB imVision Ready
760242982	360DPIP-24LCA-SM	InstaPATCH® 360, Singlemode SYSTIMAX 360 Distribution Panel 24 LC APC, Green



Splicing Cassettes

Material ID	Description	Name
760246246	G2iP-SP-12LC	12 port LC G2 Splicing Cassette without pigtails, 4 colored faceplates, imVision ready
760249049	G2iP-SP-24LC	24 port LC G2 Splicing Cassette without pigtails, 4 colored faceplates, imVision ready



imVision Software

Material ID	Description	Name
760165621	im-SYS-MGR-ENT-1K (SW)	imVision System Manager Enterprise 1000
760111187	im-SYS-MGR-ENT-2K (SW)	imVision System Manager Enterprise 2000
760165639	im-SYS-MGR-ENT-5K (SW)	imVision System Manager Enterprise 5000
760111195	im-SYS-MGR-ENT-10K (SW)	imVision System Manager Enterprise 10000
760090068	im-SYS-MGR-ENT-UNL (SW)	imVision System Manager Enterprise Unlimited
760219618	im-SYS-MGR-ENT- STA	imVision System Manager -Stand Alone
760165514	im-UP-SYSMGR-1K-2K (SW)	imVision Upgrade System Manager Enterprise 1000-2000
760165522	im-UP-SYSMGR-1K-5K (SW)	imVision Upgrade System Manager Enterprise 1000-5000
760165530	im-UP-SYSMGR-1K-10K (SW)	imVision Upgrade System Manager Enterprise 1000-10000
760165548	im-UP-SYSMGR-1K-UNL (SW)	imVision Upgrade System Manager Enterprise 1000-Unlimited
760165555	im-UP-SYSMGR-2K-5K (SW)	imVision Upgrade System Manager Enterprise 2000-5000
760111203	im-UP-SYSMGR-2K-10K (SW)	imVision Upgrade System Manager Enterprise 2000-10000
760111211	im-UP-SYSMGR-2K-UNL (SW)	imVision Upgrade System Manager Enterprise 2000-Unlimited
760165563	im-UP-SYSMGR-5K-10K (SW)	imVision Upgrade System Manager Enterprise 5000-10000
760165571	im-UP-SYSMGR-5K-UNL (SW)	imVision Upgrade System Manager Enterprise 5000-Unlimited
760111229	im-UP-SYSMGR-10K-UNL (SW)	imVision Upgrade System Manager Enterprise 10000-Unlimited



Powered Fiber Cables



POWERED FIBER CABLES			
MATERIAL ID	PRODUCT NUMBER	DESCRIPTION	AVAILABILITY
PFC-302L12	PFC-302L12	PFC,OM3,2F,I/O,12AWG,METER/D	All Sub-Regions
PFC-302L12F	PFC-302L12F	PFC,OM3,2F,I/O,12AWG,FEET/D	All Sub-Regions
PFC-302L16	PFC-302L16	PFC,OM3,2F,I/O,16AWG,METER/D	All Sub-Regions
PFC-302L16F	PFC-302L16F	PFC,OM3,2F,I/O,16AWG,FEET/D	All Sub-Regions
PFC-302O12	PFC-302O12	PFC,OM3,2F,OUTDOOR,12AWG,METER	All Sub-Regions
PFC-302O12F	PFC-302O12F	PFC,OM3,2F,OUTDOOR,12AWG,FEET	All Sub-Regions
PFC-302O16	PFC-302O16	PFC,OM3,2F,OUTDOOR,16AWG,METER	All Sub-Regions
PFC-302O16F	PFC-302O16F	PFC,OM3,2F,OUTDOOR,16AWG,FEET	All Sub-Regions
PFC-304L12	PFC-304L12	PFC,OM3,4F,I/O,12AWG,METER/D	All Sub-Regions
PFC-304L12F	PFC-304L12F	PFC,OM3,4F,I/O,12AWG,FEET/D	All Sub-Regions
PFC-304L16	PFC-304L16	PFC,OM3,4F,I/O,16AWG,METER/D	All Sub-Regions
PFC-304L16F	PFC-304L16F	PFC,OM3,4F,I/O,16AWG,FEET/D	All Sub-Regions
PFC-304O12	PFC-304O12	PFC,OM3,4F,OUTDOOR,12AWG,METER	All Sub-Regions
PFC-304O12F	PFC-304O12F	PFC,OM3,4F,OUTDOOR,12AWG,FEET	All Sub-Regions
PFC-304O16	PFC-304O16	PFC,OM3,4F,OUTDOOR,16AWG,METER	All Sub-Regions
PFC-304O16F	PFC-304O16F	PFC,OM3,4F,OUTDOOR,16AWG,FEET	All Sub-Regions
PFC-S02L12	PFC-S02L12	PFC,SINGLEMODE,2F,I/O,12AWG,METER/D	All Sub-Regions
PFC-S02L12F	PFC-S02L12F	PFC,SINGLEMODE,2F,I/O,12AWG,FEET/D	All Sub-Regions
PFC-S02L16	PFC-S02L16	PFC,SINGLEMODE,2F,I/O,16AWG,METER/D	All Sub-Regions
PFC-S02L16F	PFC-S02L16F	PFC,SINGLEMODE,2F,I/O,16AWG,FEET/D	All Sub-Regions
PFC-S02O12	PFC-S02O12	PFC,SINGLEMODE,2F,OUTDOOR,12AWG,METER	All Sub-Regions
PFC-S02O12F	PFC-S02O12F	PFC,SINGLEMODE,2F,OUTDOOR,12AWG,FEET	All Sub-Regions
PFC-S02O16	PFC-S02O16	PFC,SINGLEMODE,2F,OUTDOOR,16AWG,METER	All Sub-Regions
PFC-S02O16F	PFC-S02O16F	PFC,SINGLEMODE,2F,OUTDOOR,16AWG,FEET	All Sub-Regions
PFC-S04L12	PFC-S04L12	PFC,SINGLEMODE,4F,I/O,12AWG,METER/D	All Sub-Regions
PFC-S04L12F	PFC-S04L12F	PFC,SINGLEMODE,4F,I/O,12AWG,FEET/D	All Sub-Regions
PFC-S04L16	PFC-S04L16	PFC,SINGLEMODE,4F,I/O,16AWG,METER/D	All Sub-Regions
PFC-S04L16F	PFC-S04L16F	PFC,SINGLEMODE,4F,I/O,16AWG,FEET/D	All Sub-Regions
PFC-S04O12	PFC-S04O12	PFC,SINGLEMODE,4F,OUTDOOR,12AWG,METER	All Sub-Regions
PFC-S04O12F	PFC-S04O12F	PFC,SINGLEMODE,4F,OUTDOOR,12AWG,FEET	All Sub-Regions
PFC-S04O16	PFC-S04O16	PFC,SINGLEMODE,4F,OUTDOOR,16AWG,METER	All Sub-Regions
PFC-S04O16F	PFC-S04O16F	PFC,SINGLEMODE,4F,OUTDOOR,16AWG,FEET	All Sub-Regions
PFC-S12L12	PFC-S12L12	PFC,SINGLEMODE,12F,I/O,12AWG,METER/D	All Sub-Regions
PFC-S12L12F	PFC-S12L12F	PFC,SINGLEMODE,12F,I/O,12AWG,FEET/D	All Sub-Regions
PFC-S12L16	PFC-S12L16	PFC,SINGLEMODE,12F,I/O,16AWG,METER/D	All Sub-Regions
PFC-S12L16F	PFC-S12L16F	PFC,SINGLEMODE,12F,I/O,16AWG,FEET/D	All Sub-Regions
PFC-S12O12	PFC-S12O12	PFC,SINGLEMODE,12F,OUTDOOR,12AWG,METER	All Sub-Regions
PFC-S12O12F	PFC-S12O12F	PFC,SINGLEMODE,12F,OUTDOOR,12AWG,FEET	All Sub-Regions
PFC-S12O16	PFC-S12O16	PFC,SINGLEMODE,12F,OUTDOOR,16AWG,METER	All Sub-Regions
PFC-S12O16F	PFC-S12O16F	PFC,SINGLEMODE,12F,OUTDOOR,16AWG,FEET	All Sub-Regions

Powered Fiber Cables

1 AND 2 EXTENDERS

Material ID	Description	Availability
PFU-P-C-O-060-02	60W, 2 Port PoE Extender*	All Sub-Regions
PFU-P-C-O-060-01	60W, 1 port PoE Extender	All Sub-Regions

*The 60W, 2-port PoE Extender provides a maximum of 30W on each port.



POWER EXTENDER/FIBER PASS-THRU

Material ID	Description	Availability
PFU-48-C-O-060-01	Power Extender, Universal Mount, Outdoor, 48 Vdc, Fiber Pass Through	All Sub-Regions
PFU-12-C-O-060-01	Power Extender, Universal Mount, Outdoor, 12 Vdc, Fiber Pass Through	All Sub-Regions
PFU-P-C-O-060-02	PoE Extender, 2 Port Universal Mount, Outdoor, 2-Port	All Sub-Regions



POWER SUPPLY

Material ID	Description	Availability
PFP-PX-8M	Power Express Distribution module supports max. 8 Devices	All Sub-Regions - Excluding Argentina
PFP-PX-S1	Power Express Distribution shelf with alarm module	All Sub-Regions - Excluding Argentina
PFP-PX-SF	Power Express Blank Slot Panel	All Sub-Regions - Excluding Argentina
PFP-SPS-1600M	1600W SPS Power Rectifier module	All Sub-Regions - Excluding Argentina
PFP-SPS-C1	SPS Rectifier Controller Display	All Sub-Regions - Excluding Argentina
PFP-SPS-S1	SPS Rectifier Power Distribution Shelf	All Sub-Regions - Excluding Argentina
PFP-SPS-SF	SPS Rectifier Blank Slot Panel	All Sub-Regions - Excluding Argentina



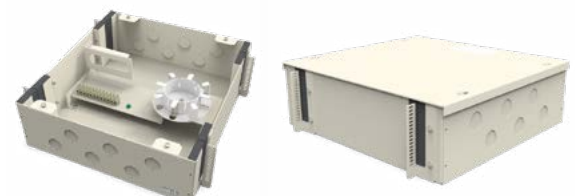
SURFACE MOUNT BOXES

Material ID	Description	Availability
760248944	Kit, SMB, 1 Fiber Port, 1 Power Port, Beige	All Sub-Regions
760248943	Kit, SMB, 1 Fiber Port, 1 Power Port, White	All Sub-Regions
760248942	Kit, SMB, 1 Fiber Port, 1 Power Port, Black	All Sub-Regions
760249095	Kit, SMB, 2 Fiber Ports, 2 Power Ports, Beige	All Sub-Regions
760249094	Kit, SMB, 2 Fiber Ports, 2 Power Ports, White	All Sub-Regions
760249093	Kit, SMB, 2 Fiber Ports, 2 Power Ports, Black	All Sub-Regions



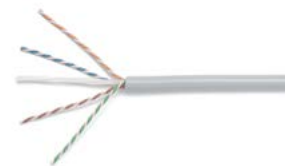
PLENUM POWERED FIBER CABLE TRANSITION BOX

Material ID	Description	Availability
760250853	PFC Transition Box, Plenum rated, cool gray	All Sub-Regions



Copper solutions

Category 6A UTP products



GIGASPEED® X10D U/UTP 1091B NON-PLENUM CABLES

MATERIAL ID	PRODUCT NUMBER	PAIR COUNT	JACKET COLOR	LENGTH	PACKAGING
760107144	1091B WH 4/23 W1000	4	White	1000 ft (305 M)	We Tote Box
760107078	1091B SL 4/23 W1000	4	Slate	1000 ft (305 m)	We Tote Box
760107094	1091B BL 4/23 W1000	4	Blue	1000 ft (305 m)	We Tote Box
760107102	1091B LB 4/23 W1000	4	Light Blue	1000 ft (305 m)	We Tote Box
760107151	1091B YL 4/23 W1000	4	Yellow	1000 ft (305 m)	We Tote Box

GIGASPEED® X10D U/UTP 1091SD NON-PLENUM CABLES

MATERIAL ID	PRODUCT NUMBER	PAIR COUNT	JACKET COLOR	LENGTH	PACKAGING
760240218	1091SD BL 4/23 R1000	4	Blue	1000 ft (305 M)	Reel
760240220	1091SD WH 4/23 R1000	4	White	1000 ft (305 m)	Reel
760240222	1091SD SL 4/23 R1000	4	Slate	1000 ft (305 m)	Reel

GIGASPEED® X10D U/UTP 2091B PLENUM CABLES

MATERIAL ID	PRODUCT NUMBER	PAIR COUNT	JACKET COLOR	LENGTH	PACKAGING
760107268	2091B WH 4/23 W1000	4	White	1000 ft (305 M)	We Tote Box
760107250	2091B SL 4/23 W1000	4	Slate	1000 ft (305 m)	We Tote Box
760107201	2091B BL 4/23 W1000	4	Blue	1000 ft (305 m)	We Tote Box
760107276	2091B YL 4/23 W1000	4	Yellow	1000 ft (305 m)	We Tote Box

GIGASPEED® X10D U/UTP 2091SDB PLENUM CABLES

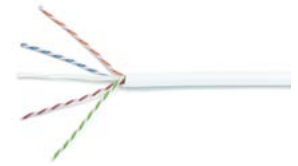
MATERIAL ID	PRODUCT NUMBER	PAIR COUNT	JACKET COLOR	LENGTH	PACKAGING
760253621	2091SDB BL 4/23 R1000	4	Blue	1000 ft (305 M)	Reel
760253622	2091SDB WH 4/23 R1000	4	White	1000 ft (305 m)	Reel
760253623	2091SDB SL 4/23 R1000	4	Slate	1000 ft (305 m)	Reel

GIGASPEED® X10D U/UTP3091B LSZH CABLES

MATERIAL ID	PRODUCT NUMBER	PAIR COUNT	JACKET COLOR	LENGTH	PACKAGING
760106039	3091B BLU C6A 4/23 U/UTP R1000	4	Blue	1000 FT (305 M)	Reel
760107326	3091B BLU C6A 4/23 U/UTP W1000	4	Blue	1000 ft (305 M)	We Tote Box
760105122	3091B WHT C6A 4/23 U/UTP R1000	4	White	1000 ft (305 M)	Reel
760107318	3091B WHT C6A 4/23 U/UTP W1000	4	White	1000 ft (305 M)	We Tote Box
760106047	3091B SLT C6A 4/23 U/UTP R1000	4	Slate	1000 ft (305 M)	Reel
760107334	3091B SLT C6A 4/23 U/UTP W1000	4	Slate	1000 ft (305 M)	We Tote Box

Copper solutions

Category 6A UTP products



GIGASPEED® X10D U/UTP 1091B NON-PLENUM CABLES - BRAZIL ONLY

MATERIAL ID	PRODUCT NUMBER	PAIR COUNT	JACKET COLOR	LENGTH	PACKAGING
760145185	1091B BLU C6A 4/23 U/UTP R1000 (ANATEL)	4	Blue	1000 FT (305 M)	Reel
760145219	1091B BLU C6A 4/23 U/UTP W1000 (ANATEL)	4	Blue	1000 ft (305 M)	We Tote Box
760145193	1091B WHT C6A 4/23 U/UTP R1000 (ANATEL)	4	White	1000 ft (305 M)	Reel
760145227	1091B WHT C6A 4/23 U/UTP W1000 (ANATEL)	4	White	1000 ft (305 M)	We Tote Box
760145201	1091B SLT C6A 4/23 U/UTP R1000 (ANATEL)	4	Slate	1000 ft (305 M)	Reel
760145235	1091B SLT C6A 4/23 U/UTP W1000 (ANATEL)	4	Slate	1000 ft (305 M)	We Tote Box

GIGASPEED® X10D U/UTP 2091B PLENUM CABLES - BRAZIL ONLY

MATERIAL ID	PRODUCT NUMBER	PAIR COUNT	JACKET COLOR	LENGTH	PACKAGING
760146910	2091B BLU C6A 4/23 U/UTP R1000 (ANATEL)	4	Blue	1000 FT (305 M)	Reel
760146928	2091B BLU C6A 4/23 U/UTP W1000 (ANATEL)	4	Blue	1000 ft (305 M)	We Tote Box
760146936	2091B WHT C6A 4/23 U/UTP R1000 (ANATEL)	4	White	1000 ft (305 M)	Reel
760146944	2091B WHT C6A 4/23 U/UTP W1000 (ANATEL)	4	White	1000 ft (305 M)	We Tote Box
760146951	2091B SLT C6A 4/23 U/UTP R1000 (ANATEL)	4	Slate	1000 ft (305 M)	Reel
760146969	2091B SLT C6A 4/23 U/UTP W1000 (ANATEL)	4	Slate	1000 ft (305 M)	We Tote Box

GIGASPEED® X10D U/UTP 3091B LSZH CABLES - BRAZIL ONLY

MATERIAL ID	PRODUCT NUMBER	PAIR COUNT	JACKET COLOR	LENGTH	PACKAGING
760146977	3091B WHT C6A 4/23 U/UTP R1000 (ANATEL)	4	White	1000 FT (305 M)	Reel
760146985	3091B WHT C6A 4/23 U/UTP W1000 (ANATEL)	4	White	1000 ft (305 M)	We Tote Box
760146993	3091B BLU C6A 4/23 U/UTP R1000 (ANATEL)	4	Blue	1000 ft (305 M)	Reel
760147009	3091B BLU C6A 4/23 U/UTP W1000 (ANATEL)	4	Blue	1000 ft (305 M)	We Tote Box
760147017	3091B SLT C6A 4/23 U/UTP R1000 (ANATEL)	4	Slate	1000 ft (305 M)	Reel
760147025	3091B SLT C6A 4/23 U/UTP W1000 (ANATEL)	4	Slate	1000 ft (305 M)	We Tote Box

Copper solutions

Category 6A UTP products



GIGASPEED® X10D 1100GS6 PANELS

MATERIAL ID	PRODUCT NUMBER	DESCRIPTION	iPATCH READY
760152587	360-IPR-1100-E-GS6-1U-24	24-Port Evolve Patch Panel	Yes
760152595	360-IPR-1100-E-GS6-2U-48	48-Port Evolve Patch Panel	Yes
760151324	360-IPR-1100A-E-GS6-1U-24	24-Port Evolve Angled Patch Panel	Yes
760151779	360-IPR-1100A-E-GS6-2U-48	48-Port Evolve Angled Patch Panel	Yes
760151183	360-IPR-1100-GS6-DM6	1100GS6 Evolve Distribution Module 6-Port	–
760155739	360-E-KIT-1U	1U Evolve Panel Kit	Yes
760155747	360-E-KIT-2U	2U Evolve Panel Kit	Yes
760152785	360-A-E-KIT-1U	Angled 1U Evolve Panel Kit	Yes
760152793	360-A-E-KIT-2U	Angled 2U Evolve Panel Kit	Yes
760186502	360 and UNP Label Sheet A4	Label Sheet for 360 and Universal Panels, A4	–



GIGASPEED® X10D PATCHMAX GS6 PANELS

MATERIAL ID	PRODUCT NUMBER	DESCRIPTION	iPATCH READY
760102251	360-PM-GS6-2U-24	24-Port Patch Panel	Yes
760128207	360-PM-GS6-2U-48	48-Port Patch Panel	Yes
760102277	360-PM-GS6-DM6	GS6 6-Port Distribution Module	–
760108993	360-PM-KIT-2U-24	2U Panel Kit, 24-Port	Yes
760117408	360-PM-KIT-2U-48	2U Panel Kit, 48-Port	Yes
760186502	360 and UNP Label Sheet A4	Label Sheet for 360 and Universal Panels, A4	–

Copper solutions

Category 6A UTP products



GIGASPEED® X10D MGS600 SERIES INFORMATION OUTLET		
MATERIAL ID	PRODUCT NUMBER	COLOR
760092361	MGS600-003	Black
760092379	MGS600-112	Orange
760092387	MGS600-123	Yellow
760092403	MGS600-226	Green
760092411	MGS600-246	Ivory
760092429	MGS600-262	White
760092437	MGS600-270	Gray
760092445	MGS600-317	Red
760092452	MGS600-318	Blue
760092460	MGS600-361	Violet
760092478	MGS600-148	Almond
760250045	ECO MGS600-262-BULK	White
760250046	ECO MGS600-003-BULK	Black
760250047	ECO MGS600-318-BULK	Blue
760250048	ECO MGS600-246-BULK	Ivory

GIGASPEED® X10D 360GS10E MODULAR PATCH CORD CONFIGURATOR



Material ID

CPCSSZ2	360GS10E Solid LSZH Cordage
CPCS4Z2	360GS10E Single-ended Solid LSZH Cordage
CPPSSZ2**	ECO 360GS10E-L ECO Modular Patch Cord

Cord color options (below) are limited as follows:
 CPCSSZ2: 1,2,3,4,6,7,8,9,B,C,Z
 CPCS4Z2: 1,2,3,4,6,7,8,9,B,C,Z
 CPPSSZ2: 1,2,3,4,6,7,8,9,B,C,Z

Cord color			
1	Black	9	Yellow
2	Light Blue	B	Lilac
3	Dark Gray	C	Gray
4	Spring Green	K	Pink
6	Orange	L	Violet
7	Red	M	Green
8	White	Z	Blue

-0

Length

XXX	1-100 feet / 1-30 meters
-----	--------------------------

Unit of Measure

F	Foot
M	Meter

Information regarding T568A standard (A-wired) patch cord is available from your local sales representative.
 *SecureMAX Patch Cords and Accessories are not available for sale in Europe, Russia, Australia and Japan.
 Please contact your local sales representative to check availability in your country.
 **Eco-friendly packaging. Does not contain single use plastics in packaging.

Copper solutions

Category 6A UTP products



CEILING CONNECTOR ASSEMBLIES

MATERIAL ID	DESCRIPTION
760244061	Ceiling Connector Assembly (CCA) without cordage, Black
760234921	Ceiling Connector Assembly (CCA) without cordage, White
CO1SJO2-11F0XX*	CommScope Category 6A U/UTP Cord, Plenum, RJ45 to Ceiling connector Black
CO13JX2-88N018	CommScope Category 6A U/UTP Cord, Plenum, RJ45 to Ceiling connector White - 18 Inch
760235590	CCA-CAT6A-LSZH-WHITE-N018
760235589	CCA-CAT6A-LSZH-BLACK-N018

*XX – 02, 03, 07, 11, 15, 20, 25, 30, 40, 50 ft.

Copper solutions

Category 6A F/UTP products



GIGASPEED® X10D F/UTP 1291B NON-PLENUM CABLES

MATERIAL ID	PRODUCT NUMBER	PAIR COUNT	JACKET COLOR	LENGTH	PACKAGING
760081364	1291B BL 4/23 R1000	4	Blue	1000 ft (305 M)	Reel
760081406	1291B WH 4/23 R1000	4	White	1000 ft (305 m)	Reel
760081398	1291B SL 4/23 R1000	4	Slate	1000 ft (305 m)	Reel

GIGASPEED® X10D F/UTP 2291B PLENUM CABLES

MATERIAL ID	PRODUCT NUMBER	PAIR COUNT	JACKET COLOR	LENGTH	PACKAGING
760122630	2291B BL 4/23 R1000	4	Blue	1000 ft (305 M)	Reel
760122648	2291B WH 4/23 R1000	4	White	1000 ft (305 m)	Reel
760122655	2291B SL 4/23 R1000	4	Slate	1000 ft (305 m)	Reel

GIGASPEED® X10D F/UTP 3291B LSZH CABLES

MATERIAL ID	PRODUCT NUMBER	PAIR COUNT	JACKET COLOR	LENGTH	PACKAGING
760081315	3291B BLU C6A 4/23 F/UTP R1000	4	Blue	1000 FT (305 M)	Reel
760168377	3291B SLT C6A 4/23 F/UTP R1000	4	Slate	1000 ft (305 m)	Reel
760081323	3291B WHT C6A 4/23 F/UTP R1000	4	White	1000 ft (305 m)	Reel
760181107	3291B BLU C6A 4/23 F/UTP R1000 (ANATEL)	4	Blue	1000 ft (305 M)	Reel
760181099	3291B SLT C6A 4/23 F/UTP R1000 (ANATEL)	4	Slate	1000 ft (305 m)	Reel
760181115	3291B WHT C6A 4/23 F/UTP R1000 (ANATEL)	4	White	1000 ft (305 m)	Reel



GIGASPEED® X10D SHIELDED HIGH DENSITY INFORMATION OUTLET

MATERIAL ID	PRODUCT NUMBER	DESCRIPTION
760152801	HGS620	GigaSPEED X10D Shielded High Density Information Outlet
760152819	HGS620-BULK100	GigaSPEED X10D Shielded High Density Information Outlet, 100 pack
760250040	ECO HGS620-BULK	GigaSPEED X10D HGS620 Shielded High Density Information Outlet, (24 ea/pkg)

Copper solutions

Category 6A FTP products



GIGASPEED® X10D G10SP MODULAR PATCH CORD CONFIGURATOR

Material ID

CA111H2	GigaSPEED X10D G10SP CM Modular Patch Cords
CA111K2	GigaSPEED X10D G10SP LSZH Modular Patch Cords

Cord color options (below) are limited as follows:
 CA111H2: 1,6,7,8,9,C,L,M,Z
 CA111K2: 1,3,6,7,8,9,C,M,Z

Cord color			
1	Black	9	Yellow
2	Light Blue	B	Lilac
3	Dark Gray	C	Gray
4	Spring Green	K	Pink
6	Orange	L	Violet
7	Red	M	Green
8	White	Z	Blue

Length

XXX	1-100 feet / 1-30 meters
-----	--------------------------

Unit of Measure

F	Foot
M	Meter

GIGASPEED X10D® EVOLVE HIGH DENSITY SHIELDED MODULAR PANELS

MATERIAL ID	PRODUCT NUMBER	DESCRIPTION
760150144	360-IPR-MFTP-E-HD6B-1U-24	SYSTIMAX 360™ GigaSPEED X10D® Evolve High Density Shielded Modular Panel, 24 port
760151290	360-IPR-MFTP-A-E-HD6B-1U-24	SYSTIMAX 360™ GigaSPEED X10D® Evolve High Density Shielded Modular Panel, 24 port
760151498	360-IPR-MFTP-E-HD6B-2U-48	SYSTIMAX 360™ GigaSPEED X10D® Evolve High Density Shielded Modular Panel, 48 port
760151746	360-IPR-MFTP-A-E-HD6B-2U-48	SYSTIMAX 360™ GigaSPEED X10D® Evolve High Density Shielded Modular Panel, 48 port



CEILING CONNECTOR ASSEMBLIES

MATERIAL ID	DESCRIPTION
760250028	ECO CCA, SHIELDED – KIT (5 PCS)
COP1KW2-88F0XX*	CCA-CAT6A-SHIELDED PLENUM-ECO PKG (2 PC)
COP1KZ2-88F0XX*	CCA-CAT6A-SHIELDED LSZH-ECO PKG (2 PC)
COP1KW2-88N018	CCA-CAT6A-SHIELDED PLENUM-ECO PKG (2 PC) -18 INCH
COP1KZ2-88N018	CCA-CAT6A-SHIELDED LSZH-ECO PKG (2 PC) – 18 INCH

*XX – 02, 03, 07, 11, 15, 20, 25, 30, 40, 50 ft.

Copper solutions

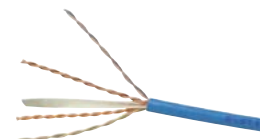
Category 6 UTP products



GIGASPEED® XL U/UTP 1071E NON-PLENUM CABLES

MATERIAL ID	PRODUCT NUMBER	PAIR COUNT	JACKET COLOR	LENGTH	PACKAGING
700212046	1071E WH 4/23 W1000	4	White	1000 ft (305 M)	We Tote Box
700211931	1071E SL 4/23 W1000	4	Slate	1000 ft (305 m)	We Tote Box
760004689	1071E BL 4/23 W1000	4	Blue	1000 ft (305 m)	We Tote Box
700211964	1071E LB 4/23 W1000	4	Light Blue	1000 ft (305 m)	We Tote Box
700211998	1071E YL 4/23 W1000	4	Yellow	1000 ft (305 m)	We Tote Box

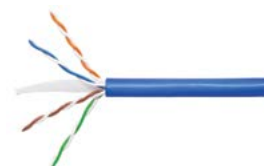
* Other colors available, contact your local sales representative



GIGASPEED® XL U/UTP 2071E PLENUM CABLES

MATERIAL ID	PRODUCT NUMBER	PAIR COUNT	JACKET COLOR	LENGTH	PACKAGING
700208101	2071E WH 4/23 W1000	4	White	1000 ft (305 M)	We Tote Box
700214372	2071E SL 4/23 W1000	4	Slate	1000 ft (305 m)	We Tote Box
700208093	2071E BL 4/23 W1000	4	Blue	1000 ft (305 m)	We Tote Box
700210123	2071E YL 4/23 W1000	4	Yellow	1000 ft (305 m)	We Tote Box

* Other colors available, contact your local sales representative



GIGASPEED® XL U/UTP 3071E LSHZ CABLES

MATERIAL ID	PRODUCT NUMBER	PAIR COUNT	JACKET COLOR	LENGTH	PACKAGING
700216484	3071E BLU C6 4/23 U/UTP R1000	4	Blue	1000 FT (305 M)	Reel
700216492	3071E BLU C6 4/23 U/UTP W1000	4	Blue	1000 ft (305 M)	We Tote Box
700216443	3071E WHT C6 4/23 U/UTP R1000	4	White	1000 ft (305 M)	Reel
700216450	3071E WHT C6 4/23 U/UTP W1000	4	White	1000 ft (305 M)	We Tote Box
700216419	3071E SLT C6 4/23 U/UTP R1000	4	Slate	1000 ft (305 M)	Reel
760095554	3071E SLT C6 4/23 U/UTP W1000	4	Slate	1000 ft (305 M)	We Tote Box

* Other colors available, contact your local sales representative

Copper solutions

Category 6 UTP products

GIGASPEED® XL U/UTP 1071E NON-PLENUM CABLES - BRAZIL ONLY

MATERIAL ID	PRODUCT NUMBER	PAIR COUNT	JACKET COLOR	LENGTH	PACKAGING
760051458	1071E BL 4/23 W1000 (ANATEL)	4	Blue	1000 FT (305 M)	We Tote Box
760051474	1071E WH 4/23 R1000 (ANATEL)	4	White	1000 ft (305 M)	Reel
760051466	1071E WH 4/23 W1000 (ANATEL)	4	White	1000 ft (305 M)	We Tote Box
760051508	1071E SL 4/23 R1000 (ANATEL)	4	Slate	1000 ft (305 M)	Reel
760050963	1071E SL 4/23 W1000 (ANATEL)	4	Slate	1000 ft (305 M)	We Tote Box

GIGASPEED® XL U/UTP 2071E PLENUM CABLES - BRAZIL ONLY

MATERIAL ID	PRODUCT NUMBER	PAIR COUNT	JACKET COLOR	LENGTH	PACKAGING
760163675	2071E SL 4/23 W1000 (ANATEL)	4	Slate	1000 FT (305 M)	We Tote Box

GIGASPEED® XL U/UTP 3071E LSZH CABLES - BRAZIL ONLY

MATERIAL ID	PRODUCT NUMBER	PAIR COUNT	JACKET COLOR	LENGTH	PACKAGING
760164012	3071E WHT C6 4/23 U/UTP W1000 (ANATEL)	4	White	1000 FT (305 M)	We Tote Box
760235501	3071E SLT C6 4/23 U/UTP W1000 (ANATEL)	4	Slate	1000 FT (305 M)	We Tote Box

Copper solutions

Category 6 UTP products



GIGASPEED® XL 1100GS3 PANELS

MATERIAL ID	PRODUCT NUMBER	DESCRIPTION	iPATCH READY
760152561	360-IPR-1100-E-GS3-1U-24	24-Port Evolve Patch Panel	Yes
760152579	360-IPR-1100-E-GS3-2U-48	48-Port Evolve Patch Panel	Yes
760151308	360-IPR-1100A-E-GS3-1U-24	24-Port Evolve Angled Patch Panel	Yes
760151753	360-IPR-1100A-E-GS3-2U-48	48-Port Evolve Angled Patch Panel	Yes
760151167	360-IPR-1100-GS3-DM6	GS3 Evolve Distribution Module 6-Port	–
760155739	360-E-KIT-1U	1U Evolve Panel Kit	Yes
760155747	360-E-KIT-2U	2U Evolve Panel Kit	Yes
760152785	360-A-E-KIT-1U	Angled 1U Evolve Panel Kit	Yes
760152793	360-A-E-KIT-2U	Angled 2U Evolve Panel Kit	Yes
760186502	360 and UNP Label Sheet A4	Label Sheet for 360 and Universal Panels, A4	–



GIGASPEED® XL PATCHMAX® GS3 PANELS

MATERIAL ID	PRODUCT NUMBER	DESCRIPTION	iPATCH READY
760102244	360-PM-GS3-2U-24	24-Port Patch Panel	Yes
760117366	360-PM-GS3-2U-48	48-Port Patch Panel	Yes
760108993	360-PM-KIT-2U-24	2U Panel Kit, 24-Port	Yes
760117408	360-PM-KIT-2U-48	2U Panel Kit, 48-Port	Yes
760117382	360-PM-GS3-DM-12	GS3 12-Port Distribution Module Kit	–
760102269	360-PM-GS3-DM-6	GS3 6-Port Distribution Module Kit	–
760186502	360 and UNP Label Sheet A4	Label Sheet for 360 and Universal Panels, A4	–

Copper solutions

Category 6 UTP products



SYSTIMAX 360 GIGASPEED XL MGS 400

MATERIAL ID	PRODUCT NUMBER	COLOR
700206667	MGS400-003	Black
700206683	MGS400-112	Orange
700206691	MGS400-123	Yellow
700206709	MGS400-226	Green
700206725	MGS400-262	White
700206741	MGS400-317	Red
700206758	MGS400-318	Blue
700206675	MGS400-361	Violet
760074211	MGS400-148	Almond
700206717	MGS400-246	Ivory
700206733	MGS400-270	Gray
760250041	ECO MGS400-262-BULK	White
760250042	ECO MGS400-003-BULK	Black
760250043	ECO MGS400-318-BULK	Blue
760250044	ECO MGS400-246-BULK	Ivory

SYSTIMAX 360GS8E MODULAR PATCH CORD CONFIGURATOR



Material ID

CPC3312	GS8E Stranded Cordage Modular Patch Cord
CPC3372	GS8E Solid Plenum Cable Modular Cord
CPC3482	GS8E Single-ended Solid Cable
CPC3472	GS8E Single End Solid Plenum Modular Cord

Cord color options (below) are limited as follows:

CPC3312: 1,2,3,4,6,7,8,9,B,Z
 CPC3372: 1,4,6,7,8,9,B,C,Z
 CPC3482: 1,2,3,4,6,7,8,9,B,C,Z
 CPC3472: 1,4,6,7,8,9,B,C,Z

Cord color

1	Black	9	Yellow
2	Light Blue	B	Lilac
3	Dark Gray	C	Gray
4	Spring Green	K	Pink
6	Orange	L	Violet
7	Red	M	Green
8	White	Z	Blue

Length

XXX 1-100 feet / 1-30 meters

Unit of Measure

F Foot
 M Meter

Information regarding T568A standard (A-wired) patch cord is available from your local sales representative.
 Information concerning Zone Extension Cords visit our eCatalog at www.commscope.com

Copper solutions

Category 6 UTP products

SYSTIMAX 360GS8E MODULAR PATCH CORD CONFIGURATOR

Material ID	
CPC3392	GS8E Stranded LSZH Cordage
CPC3492	GS8E Single-ended Stranded LSZH Cordage
CPC3222	GS8E MGS400 on 3071 Solid LSZH Cable
CPC3422	GS8E Single-ended Solid LSZH Cable
CPC2222	MGS400-MGS400 on 3071 Solid LSZH Cable
CPP3392	GS8E Stranded LSZH Cordage - ECO

Cord color options (below) are limited as follows:
 CPC3392: 1,2,3,4,6,7,8,9,B,Z
 CPC3492: 1,2,3,4,6,7,8,9,B,Z
 CPC3222: 1,2,3,4,6,7,8,9,B,Z
 CPC3422: 1,2,3,4,6,7,8,9,B,Z
 CPC2222: 8, B
 CPP3392: 1,2,3,4,6,7,8,9,B,Z

Cord color			
1	Black	9	Yellow
2	Light Blue	B	Lilac
3	Dark Gray	C	Gray
4	Spring Green	K	Pink
6	Orange	L	Violet
7	Red	M	Green
8	White	Z	Blue

Length	
XXX	1-100 feet / 1-30 meters

Unit of Measure	
F	Foot
M	Meter

Copper solutions

Category 6 UTP products

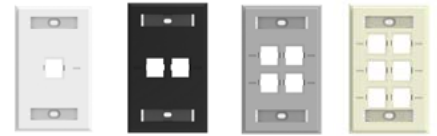


CEILING CONNECTOR ASSEMBLIES

MATERIAL ID	DESCRIPTION
760244061	Ceiling Connector Assembly (CCA) without cordage, Black
760234921	Ceiling Connector Assembly (CCA) without cordage, White
CO13JX2-11F0XX*	CommScope Category 6 U/UTP Cord, Plenum, RJ45 to Ceiling connector Black
CO13JX2-88F0XX*	CommScope Category 6 U/UTP Cord, Plenum, RJ45 to Ceiling connector White
CO1SJO2-88F0XX*	CommScope Category 6A U/UTP Cord, Plenum, RJ45 to Ceiling connector White
CO13JX2-11N018	CommScope Category 6 U/UTP Cord, Plenum, RJ45 to Ceiling connector Black - 18 Inch
CO1SJO2-11N018	CommScope Category 6A U/UTP Cord, Plenum, RJ45 to Ceiling connector Black - 18 Inch
CO1SJO2-88N018	CommScope Category 6A U/UTP Cord, Plenum, RJ45 to Ceiling connector White - 18 Inch
760235586	CCA-CAT6-LSZH-WHITE-N018
760235585	CCA-CAT6-LSZH-BLACK-N018

*XX – 02, 03, 07, 11, 15, 20, 25, 30, 40, 50 ft.

Faceplates



MODULAR FLUSH-MOUNT FACEPLATES WITH UNIVERSAL OPENING

MATERIAL ID	PRODUCT NUMBER	DESCRIPTION	LABELED	COLOR
760249144	FP-LBL-1P-266	1 Port Modular Flush Mount Faceplate	Yes	Prowhite
760249145	FP-LBL-2P-266	2 Port Modular Flush Mount Faceplate	Yes	Prowhite
760249146	FP-LBL-4P-266	4 Port Modular Flush Mount Faceplate	Yes	Prowhite
760249147	FP-LBL-6P-266	6 Port Modular Flush Mount Faceplate	Yes	Prowhite
760249148	FP-NLBL-1P-266	1 Port Modular Flush Mount Faceplate	No	Prowhite
760249149	FP-NLBL-2P-266	2 Port Modular Flush Mount Faceplate	No	Prowhite
760249150	FP-NLBL-4P-266	4 Port Modular Flush Mount Faceplate	No	Prowhite
760249151	FP-NLBL-6P-266	6 Port Modular Flush Mount Faceplate	No	Prowhite
760248924	FP-LBL-1P-003	1 Port Modular Flush Mount Faceplate	Yes	Black
760248925	FP-LBL-2P-003	2 Port Modular Flush Mount Faceplate	Yes	Black
760248926	FP-LBL-4P-003	4 Port Modular Flush Mount Faceplate	Yes	Black
760248927	FP-LBL-6P-003	6 Port Modular Flush Mount Faceplate	Yes	Black
760248928	FP-NLBL-1P-003	1 Port Modular Flush Mount Faceplate	No	Black
760248929	FP-NLBL-2P-003	2 Port Modular Flush Mount Faceplate	No	Black
760248930	FP-NLBL-4P-003	4 Port Modular Flush Mount Faceplate	No	Black
760248931	FP-NLBL-6P-003	6 Port Modular Flush Mount Faceplate	No	Black
760249136	FP-LBL-1P-270	1 Port Modular Flush Mount Faceplate	Yes	Gray
760249137	FP-LBL-2P-270	2 Port Modular Flush Mount Faceplate	Yes	Gray
760249138	FP-LBL-4P-270	4 Port Modular Flush Mount Faceplate	Yes	Gray
760249139	FP-LBL-6P-270	6 Port Modular Flush Mount Faceplate	Yes	Gray
760249140	FP-NLBL-1P-270	1 Port Modular Flush Mount Faceplate	No	Gray
760249141	FP-NLBL-2P-270	2 Port Modular Flush Mount Faceplate	No	Gray
760249142	FP-NLBL-4P-270	4 Port Modular Flush Mount Faceplate	No	Gray
760249143	FP-NLBL-6P-270	6 Port Modular Flush Mount Faceplate	No	Gray
760249168	FP-LBL-1P-246	1 Port Modular Flush Mount Faceplate	Yes	Ivory
760249169	FP-LBL-2P-246	2 Port Modular Flush Mount Faceplate	Yes	Ivory
760249170	FP-LBL-4P-246	4 Port Modular Flush Mount Faceplate	Yes	Ivory
760249171	FP-LBL-6P-246	6 Port Modular Flush Mount Faceplate	Yes	Ivory
760249172	FP-NLBL-1P-246	1 Port Modular Flush Mount Faceplate	No	Ivory
760249173	FP-NLBL-2P-246	2 Port Modular Flush Mount Faceplate	No	Ivory
760249174	FP-NLBL-4P-246	4 Port Modular Flush Mount Faceplate	No	Ivory
760249175	FP-NLBL-6P-246	6 Port Modular Flush Mount Faceplate	No	Ivory
760249128	FP-LBL-1P-262	1 Port Modular Flush Mount Faceplate	Yes	Elec White
760249129	FP-LBL-2P-262	2 Port Modular Flush Mount Faceplate	Yes	Elec White
760249130	FP-LBL-4P-262	4 Port Modular Flush Mount Faceplate	Yes	Elec White
760249131	FP-LBL-6P-262	6 Port Modular Flush Mount Faceplate	Yes	Elec White
760249132	FP-NLBL-1P-262	1 Port Modular Flush Mount Faceplate	No	Elec White
760249133	FP-NLBL-2P-262	2 Port Modular Flush Mount Faceplate	No	Elec White
760249134	FP-NLBL-4P-262	4 Port Modular Flush Mount Faceplate	No	Elec White
760249135	FP-NLBL-6P-262	6 Port Modular Flush Mount Faceplate	No	Elec White
760249152	FP-LBL-1P-448	1 Port Modular Flush Mount Faceplate	Yes	Light Almond
760249153	FP-LBL-2P-448	2 Port Modular Flush Mount Faceplate	Yes	Light Almond
760249154	FP-LBL-4P-448	4 Port Modular Flush Mount Faceplate	Yes	Light Almond

Faceplates

MODULAR FLUSH-MOUNT FACEPLATES WITH UNIVERSAL OPENING (CONTINUED)

MATERIAL ID	PRODUCT NUMBER	DESCRIPTION	LABELED	COLOR
760249155	FP-LBL-6P-448	6 Port Modular Flush Mount Faceplate	Yes	Light Almond
760249156	FP-NLBL-1P-448	1 Port Modular Flush Mount Faceplate	No	Light Almond
760249157	FP-NLBL-2P-448	2 Port Modular Flush Mount Faceplate	No	Light Almond
760249158	FP-NLBL-4P-448	4 Port Modular Flush Mount Faceplate	No	Light Almond
760249159	FP-NLBL-6P-448	6 Port Modular Flush Mount Faceplate	No	Light Almond
760249160	FP-LBL-1P-148	1 Port Modular Flush Mount Faceplate	Yes	Elec Almond
760249161	FP-LBL-2P-148	2 Port Modular Flush Mount Faceplate	Yes	Elec Almond
760249162	FP-LBL-4P-148	4 Port Modular Flush Mount Faceplate	Yes	Elec Almond
760249163	FP-LBL-6P-148	6 Port Modular Flush Mount Faceplate	Yes	Elec Almond
760249164	FP-NLBL-1P-148	1 Port Modular Flush Mount Faceplate	No	Elec Almond
760249165	FP-NLBL-2P-148	2 Port Modular Flush Mount Faceplate	No	Elec Almond
760249166	FP-NLBL-4P-148	4 Port Modular Flush Mount Faceplate	No	Elec Almond
760249167	FP-NLBL-6P-148	6 Port Modular Flush Mount Faceplate	No	Elec Almond

CEILING FLUSH MOUNT FACEPLATES

MATERIAL ID	PRODUCT NUMBER	DESCRIPTION	COLOR
760253234	FP-CLBL-2P-262	2 Port Ceiling Flush Mount Faceplate	Elec White
760253235	FP-CLBL-2P-003	2 Port Ceiling Flush Mount Faceplate	Black



ECO-FRIENDLY FACEPLATES

MATERIAL ID	PRODUCT NUMBER	DESCRIPTION	COLOR
760246283	M12FR-262	M12FR-262 Unshuttered Faceplate, 2-port, White, Eco-Bulk Package	White
760246281	M12D-F-262	M12D-F-262 Faceplate, 2-port, White, Eco-Bulk Packaging	White
760246288	M14D-F-262	M14D-F-262 Double Faceplate, 4-port, White, Eco-Bulk Package	White



STAINLESS STEEL FACEPLATES

MATERIAL ID	PRODUCT NUMBER	DESCRIPTION	COLOR
760100867	M11SP	1 Port Stainless Steel Faceplate	Stainless Steel
760072074	M11SP-L	1-Prt 1-Gang SS Faceplate with label	Stainless Steel
108615188	M12SP	2 port Stainless Steel Faceplate	Stainless Steel
760072181	M12SP-L	2-Prt 1-Gang SS Faceplate with label	Stainless Steel
108615196	M13SP 3	3 port Stainless Steel Faceplate	Stainless Steel
760072199	M13SP-L	3-Prt 1-Gang SS Faceplate with label	Stainless Steel
108615204	M14SP 4	4 port Stainless Steel Faceplate	Stainless Steel
760072207	M14SP-L	4-Prt 1-Gang SS Faceplate with label	Stainless Steel
108615212	M16SP 6	6 port Stainless Steel Faceplate	Stainless Steel
760072215	M16SP-L	6-Prt 1-Gang SS Faceplate with label	Stainless Steel



Faceplates

MULTIMEDIA FACEPLATES

MATERIAL ID	PRODUCT NUMBER	DESCRIPTION	COLOR
108564675	M13CLS-246	3 Port Multimedia Faceplate, Ivory (1.84 x 3.13 x 0.29 in)	Ivory
108564683	M13CLS-262	3 Port Multimedia Faceplate, White (1.84 x 3.13 x 0.29 in)	White
108564709	M13CLS-003	3 Port Multimedia Faceplate, Black (1.84 x 3.13 x 0.29 in)	Black
108168477	M13CLS-215	3 Port Multimedia Faceplate, Cream (1.84 x 3.13 x 0.29 in)	Cream



FLUSH MOUNT FACEPLATES

MATERIAL ID	PRODUCT NUMBER	DESCRIPTION	COLOR
108258401	M10L-003	1 Port Modular Faceplate	Black
108258419	M10L-246	1 Port Modular Faceplate	Ivory
108258427	M10L-262	1 Port Modular Faceplate	White
760181743	M10L-266	1 Port Modular Faceplate	ProWhite
108258435	M10L-270	1 Port Modular Faceplate	Gray
108168485	M12L-003	2 Port Modular Faceplate	Black
108168477	M12L-246	2 Port Modular Faceplate	Ivory
108168469	M12L-262	2 Port Modular Faceplate	White
760181701	M12L-266	2 Port Modular Faceplate	ProWhite
108168451	M12L-270	2 Port Modular Faceplate	Gray
108168527	M13L-003	3 Port Modular Flush Mount Faceplate	Black
108168519	M13L-246	3 Port Modular Flush Mount Faceplate	Ivory
108168501	M13L-262	3 Port Modular Flush Mount Faceplate	White
760181719	M13L-266	3 Port Modular Flush Mount Faceplate	ProWhite
108168493	M13L-270	3 Port Modular Flush Mount Faceplate	Gray
108168568	M14L-003	4 Port Modular Flush Mount Faceplate	Black
108168550	M14L-246	4 Port Modular Flush Mount Faceplate	Ivory
108168543	M14L-262	4 Port Modular Flush Mount Faceplate	White
760181727	M14L-266	4 Port Modular Flush Mount Faceplate	ProWhite
108168535	M14L-270	4 Port Modular Flush Mount Faceplate	Gray
108168600	M16L-003	6 Port Modular Flush Mount Faceplate	Black
108168592	M16L-246	6 Port Modular Flush Mount Faceplate	Ivory
108168584	M16L-262	6 Port Modular Flush Mount Faceplate	White
760181735	M16L-266	6 Port Modular Flush Mount Faceplate	ProWhite
108168576	M16L-270	6 Port Modular Flush Mount Faceplate	Gray
108685009	M28L-003	8 Port Modular Flush Mount Faceplate	Black
108685017	M28L-246	8 Port Modular Flush Mount Faceplate	Ivory
108685025	M28L-262	8 Port Modular Flush Mount Faceplate	White
760181768	M28L-266	8 Port Modular Flush Mount Faceplate	ProWhite
108685033	M28L-270	8 Port Modular Flush Mount Faceplate	Gray



Faceplates

MODULAR OUTLET WALL PHONE FACEPLATES

MATERIAL ID	PRODUCT NUMBER	DESCRIPTION	COLOR
108258443	M10LW-003	1 Port Modular Outlet Wall Phone Faceplate	Black
108258450	M10LW-246	1 Port Modular Outlet Wall Phone Faceplate	Ivory
108258427	M10LW-262	1 Port Modular Outlet Wall Phone Faceplate	White
760181750	M10LW-266	1 Port Modular Outlet Wall Phone Faceplate	ProWhite



MODULAR FURNITURE FACEPLATES

MATERIAL ID	PRODUCT NUMBER	DESCRIPTION	COLOR
106650864	M13C-003	3 Port Modular Furniture Faceplate (1.84 x 3.13 x 0.29 in)	Black
106650880	M13C-246	3 Port Modular Furniture Faceplate (1.84 x 3.13 x 0.29 in)	Ivory
106650898	M13C-262	3 Port Modular Furniture Faceplate (1.84 x 3.13 x 0.29 in)	White
106701154	M13C-270	3 Port Modular Furniture Faceplate (1.84 x 3.13 x 0.29 in)	Gray
760118240	M14CE-E -003	Faceplate 0.08 Snap	Black
760118257	M14CE-E -246	Faceplate 0.08 Snap	Ivory
760118232	M14CE-E -262	Faceplate 0.08 Snap	White
760118265	M14CE-E -270	Faceplate 0.08 Snap	Gray



DESIGNER FACEPLATES

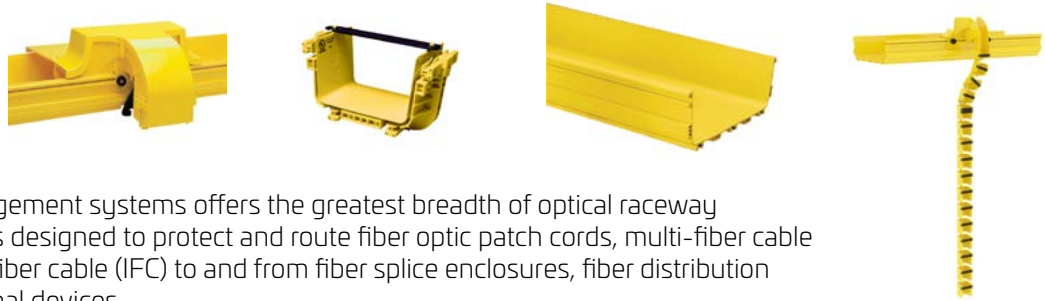
MATERIAL ID	PRODUCT NUMBER	DESCRIPTION	COLOR
108332982	M10LE-003	1 Port Designer Faceplate	Black
108333006	M10LE-246	1 Port Designer Faceplate	Ivory
108333014	M10LE-262	1 Port Designer Faceplate	White
760181933	M10LE-266	1 Port Designer Faceplate	ProWhite
108333022	M10LE-270	1 Port Designer Faceplate	Gray



FLUSH MOUNT MODULAR MOUNTING FRAME

MATERIAL ID	PRODUCT NUMBER	DESCRIPTION	COLOR
108265430	M108FR3-003	M108 Flush Mounted Modular Mounting Frame, three port	Black
108265448	M108FR3-246	M108 Flush Mounted Modular Mounting Frame, three port	Ivory
108265455	M108FR3-262	M108 Flush Mounted Modular Mounting Frame, three port	White
760181867	M108FR3-266	M108 Flush Mounted Modular Mounting Frame, three port	ProWhite
108265463	M108FR3-270	M108 Flush Mounted Modular Mounting Frame, three port	Gray
760092163	M108FR1-003	M108 Flush Mounted Modular Mounting Frame, one port	Black
760092064	M108FR1-148	M108 Flush Mounted Modular Mounting Frame, one port	Almond
760092189	M108FR1-262	M108 Flush Mounted Modular Mounting Frame, one port	White





The FiberGuide® fiber management systems offers the greatest breadth of optical raceway products in the industry. It is designed to protect and route fiber optic patch cords, multi-fiber cable assemblies and intrafacility fiber cable (IFC) to and from fiber splice enclosures, fiber distribution frames and fiber optic terminal devices.

Tool-less, Snap-Fit™ junctions significantly reduce the amount of time required for installation. Fiberguide is available in a variety of sizes and basic components include horizontal and vertical straight sections, horizontal and vertical elbows, downspouts, junctions and numerous support hardware and flex-vertical kits.

Available in a variety of sizes: 50x50, 50x150, 100x100, 100x150, 100x300, and 100x600. Below is a selection of our 100x150, 100x300 and 100x600 systems. For more sizes and options, [please download the full catalog](#).

STRAIGHT SECTIONS & FITTINGS

DESCRIPTION	100x150mm	100x300mm	100x600mm
Straight Section Horizontal - L= 1,83 mtr	FGS-MSHS-B	FGS-MSHS-F	FGS-MSHS-H
Straight Section Cover	FGS-MSNC-B/G	FGS-MSNC-F	FGS-FSFC-H
Horizontal Cross	FGS-MHXP-B	FGS-MHXP-F	FGS-MHXP-H
Horizontal Cross Cover	FGS-SHXP-B	FGS-SHXP-F	FGS-FHXP-H
T-Adapter - Horizontal	FGS-MHRT-B	FGS-MHRT-F	FGS-MHRT-H
90° Elbow - Horizontal	FGS-MH9E-B	FGS-MH9E-F	
90° Elbow Vertical - Up With Cover	FGS-MU9E-B		
90° Elbow Vertical - Down	FGS-MD9E-B	FGS-MD9E-F	
45° Elbow - Horizontal	FGS-MH4E-B	FGS-MH4E-F	FGS-MH4E-H
45° Elbow Vertical - Up With Cover	FGS-MU4E-B	FGS-MU4E-F	FGS-MU4E-H
45° Elbow Vertical - Down	FGS-MD4E-B	FGS-MD4E-F	FGS-MD4E-H
Trumpet Flare	FGS-MTRM-B	FGS-MTRM-F	FGS-MTRM-H
End Cap	FGS-HMEC-B	FGS-HMEC-F	FGS-HMEC-H

JUNCTIONS

DESCRIPTION	100x150mm	100x300mm	100x600mm
Junctions/Joiners	FGS-MFAW-B	FGS-MFAW-F	FGS-MFAW-H

FIXED DOWNSPOUTS

DESCRIPTION	100x150mm	100x300mm	100x600mm
Downspout kit	FGS-MDSP-B	FGS-MDSP-F	
Cover	FGS-MCDS-AB	FGS-SDSP-F	

EXPRESS EXIT DOWNSPOUTS

DESCRIPTION	100x150mm	100x300mm	100x600mm
50mm Express Exit™	FGS-MEXP-A/B/F	FGS-MEXP-A/B/F	FGS-MEXP-A/B/F
50mm Low-profile Express Exit™	FGS-MEXP-LP-A/B/F	FGS-MEXP-LP-A/B/F	FGS-MEXP-LP-A/B/F
100mm Express Exit™	FGS-MEXP-E-A/B/F	FGS-MEXP-E-A/B/F	FGS-MEXP-E-A/B/F
Express Exit Rear Hinged Cover for 100x300 Raceway, Yellow		FGS-MEXC-E-F	
300mm Express Exit™, No Cover		FGS-MEXP-F-F/H-NC	FGS-MEXP-F-F/H-NC

DOWNSPOUT ACCESSORIES

DESCRIPTION	100x150mm	100x300mm	100x600mm
Single 50mm Flex Tube Attachment, 50x50mm	FGS-MEX1-C-0F	FGS-MEX1-C-0F	FGS-MEX1-C-0F
Single 50mm Flex Tube Attachment, 100x100mm	FGS-KT03-A1NH	FGS-KT03-A1NH	FGS-KT03-A1NH
Dual 50mm Flex Tube Attachment, 100x100mm	FGS-KT03-ANH	FGS-KT03-ANH	FGS-KT03-ANH
Dual 50mm Flex Tube Attachment, 100x150mm	FGS-KT03-B-0F	FGS-KT03-B-0F	FGS-KT03-B-0F
50mm Flex Tube, Slotted (x= length in feet 5, 10, 15, 20, 25, 30, 35, 40, 45, 50....)	FGS-MIDY-xF	FGS-MIDY-xF	FGS-MIDY-xF
FlexVertical Kit, 50x50mm, 1219mm length	FGS-FLEXV-4F-C	FGS-FLEXV-4F-C	FGS-FLEXV-4F-C
FlexVertical Kit, 50x50mm, 2133mm length	FGS-FLEXVAD-7F-C	FGS-FLEXVAD-7F-C	FGS-FLEXVAD-7F-C
FlexVertical Dual Kit, 100x100mm to Dual 50x50mm, 1219mm length	FGS-FLEXV-4F-A2C	FGS-FLEXV-4F-A2C	FGS-FLEXV-4F-A2C

BRACKETS FOR THREADED RODS

DESCRIPTION	100x150mm	100x300mm	100x600mm
New Threaded Rod Bracket 12mm	FGS-HNTR-12MM	FGS-HNTR-F-12MM	
New Threaded Rod Bracket 16mm		FGS-HNTP-F-16MM	FGS-HNTP-H-16MM
Trapeze Support Bracket 12mm		FGS-HNTP-F-12MM	
C- Bracket Threaded Rod 12mm	FGS-HNTS-12MM	FGS-HNTS-F-12MM	FGS-HNTS-H-12MM-A
C- Bracket Threaded Rod 16mm	FGS-HNTS-16MM	FGS-HNTS-F-16MM	

TOOLS

DESCRIPTION	100x150mm	100x300mm	100x600mm
Mitre Box with Saw for 50, 100, 150 & 300mm Straight Section	FGS-MKIT-ABF	FGS-MKIT-ABF	FGS-MKIT-H

Cable Management Equipment Racks and Filler Panels



19" EQUIPMENT RACKS

MATERIAL ID	PRODUCT NUMBER	DESCRIPTION
760082479	RK3-45A	Equipment Rack, 2-Post, 3 in (76 mm) Channel x 7 ft (2134 mm) H x 19 in (482.6 mm) Aluminum (45U) 12-24 Tapped Rails, Black
760082495	RK6-45A	Equipment Rack, 2-Post, 6 in (152 mm) Channel x 7 ft (2134 mm) H x 19 in (482.6 mm) Aluminum (45U) 12-24 Tapped Rails, Black
760082529	RK4P45-29A	Equipment Rack, 4-post, 29 in (737 mm) D x 7 ft (2134 mm) H x 19 in (482.6 mm) W aluminum (45U) 12-24 tapped rails, black
760082560	RK4P45-36A	Equipment Rack, 4-Post, 36 in (914 mm) D x 7 ft (2134 mm) H - 19 in (482.6 mm) Alu (45U) 12-24 Tapped Rails, Black



FILLER PANELS

MATERIAL ID	PRODUCT NUMBER	DESCRIPTION
760162065	CPP-FPANEL-19-1U	Filler Panel, 1U x 19 in., Solid, Black
760162073	CPP-FPANEL-19-2U	Filler Panel, 2U x 19 in., Solid, Black
760162081	CPP-FPANEL-19-3U	Filler Panel, 3U x 19 in., Solid, Black

Cable Management

Horizontal Cable Management

HORIZONTAL CABLE MANAGEMENT		
MATERIAL ID	PRODUCT NUMBER	DESCRIPTION
760072942	HTK-19-SS-1U	1U 19" Single Sided Horizontal Trough Kit, black
760072959	HTK-19-SS-2U	2U 19" Single Sided Horizontal Trough Kit, black
760072967	HTK-19-SS-3U	3U 19" Single Sided Horizontal Trough Kit, black
760128843	HTK-19-DS-1U	1U 19" Double Sided Horizontal Trough Kit, black
760128850	HTK-19-DS-2U	2U 19" Double Sided Horizontal Trough Kit, black
760128868	HTK-19-DS-3U	3U 19" Double Sided Horizontal Trough Kit, black
760172908	HTK-19-SS-1U-SILVER	1U 19" Single Sided Horizontal Trough Kit, silver
760172916	HTK-19-SS-2U-SILVER	2U 19" Single Sided Horizontal Trough Kit, silver
760172924	HTK-19-SS-3U-SILVER	3U 19" Single Sided Horizontal Trough Kit, silver
760038240	HCM-19-SS-1U	1U 19" Patchcord Management
760038257	HCM-19-SS-2U	2U 19" Patchcord Management
760172882	HCM-19-SS-1U-SILVER	1U 19" Patchcord Management, silver
760172890	HCM-19-SS-2U-SILVER	2U 19" Patchcord Management, silver



CABLE MANAGERS	
MATERIAL ID	DESCRIPTION
2269081-1	1U High-Density Mini Front-Loading Cable Manager
2269081-2	2U High-Density Mini Front-Loading Cable Manager



Cable Management

Vertical Cable Management

VERTICAL CABLE MANAGEMENT		
MATERIAL ID	PRODUCT NUMBER	DESCRIPTION
760244779	VCM-DS-84-6B	Double Sided 6 X 84 VCM, black doors
760244780	VCM-DS-84-8B	Double Sided 8 X 84 VCM, black doors
760244781	VCM-DS-84-10B	Double Sided 10 X 84 VCM, black doors
760244782	VCM-DS-84-12B	Double Sided 12 X 84 VCM, black doors
760244791	VCM-SS-84-6B	Single Sided 6 X 84 VCM, black doors
760244792	VCM-SS-84-8B	Single Sided 8 X 84 VCM, black doors
760244793	VCM-SS-84-10B	Single Sided 10 X 84 VCM, black doors
760244794	VCM-SS-84-12B	Single Sided 12 X 84 VCM, black doors
760244775	VCM-DS-84-6	Double Sided 6 X 84 VCM, silver doors
760244776	VCM-DS-84-8	Double Sided 8 X 84 VCM, silver doors
760244777	VCM-DS-84-10	Double Sided 10 X 84 VCM, silver doors
760244778	VCM-DS-84-12	Double Sided 12 X 84 VCM, silver doors
760244787	VCM-SS-84-6	Single Sided 6 X 84 VCM, silver doors
760244788	VCM-SS-84-8	Single Sided 8 X 84 VCM, silver doors
760244789	VCM-SS-84-10	Single Sided 10 X 84 VCM, silver doors
760244790	VCM-SS-84-12	Single Sided 12 X 84 VCM, silver doors



Notes

Notes

Notes

CommScope pushes the boundaries of communications technology with game-changing ideas and ground-breaking discoveries that spark profound human achievement. We collaborate with our customers and partners to design, create and build the world's most advanced networks. It is our passion and commitment to identify the next opportunity and realize a better tomorrow. Discover more at commscope.com



commscope.com

Visit our website or contact your local CommScope representative for more information.

© 2022 CommScope, Inc. All rights reserved.

Unless otherwise noted, all trademarks identified by ® or ™ are registered trademarks, respectively, of CommScope, Inc. This document is for planning purposes only and is not intended to modify or supplement any specifications or warranties relating to CommScope products or services. CommScope is committed to the highest standards of business integrity and environmental sustainability with a number of CommScope's facilities across the globe certified in accordance with international standards, including ISO 9001, TL 9000, and ISO 14001. Further information regarding CommScope's commitment can be found at www.commscope.com/About-Us/Corporate-Responsibility-and-Sustainability.

CO-115494.7-EN (03/23)